

2025



We Design ,We Build

966-569311307

966-548100247

info@kenanagroup.com

www.kenanagroup.com

رؤية VISION
2030
المملكة العربية السعودية
KINGDOM OF SAUDI ARABIA



About Us



I'm pleased, on behalf of the Board of Directors of KENANA GROUP, to present a photo report of the company, which reviews the latest achievements witnessed by our national institution in line with Vision 2030

Basad on Many years of expariance of its management and the professional development potential level of its employees is a Soild

The report includes our performance, which proves our great ability to continue to lead in our field, which was characterized by its expansion in our beloved homeland



And because we were able in a short time to obtain the trust of our customers, it was imperative that we continue to continue this success while planning for the future, supported by the strength of our presence, and our various projects that speak of a large entity that has become one of the first choices of any investor that links speed and excellence.

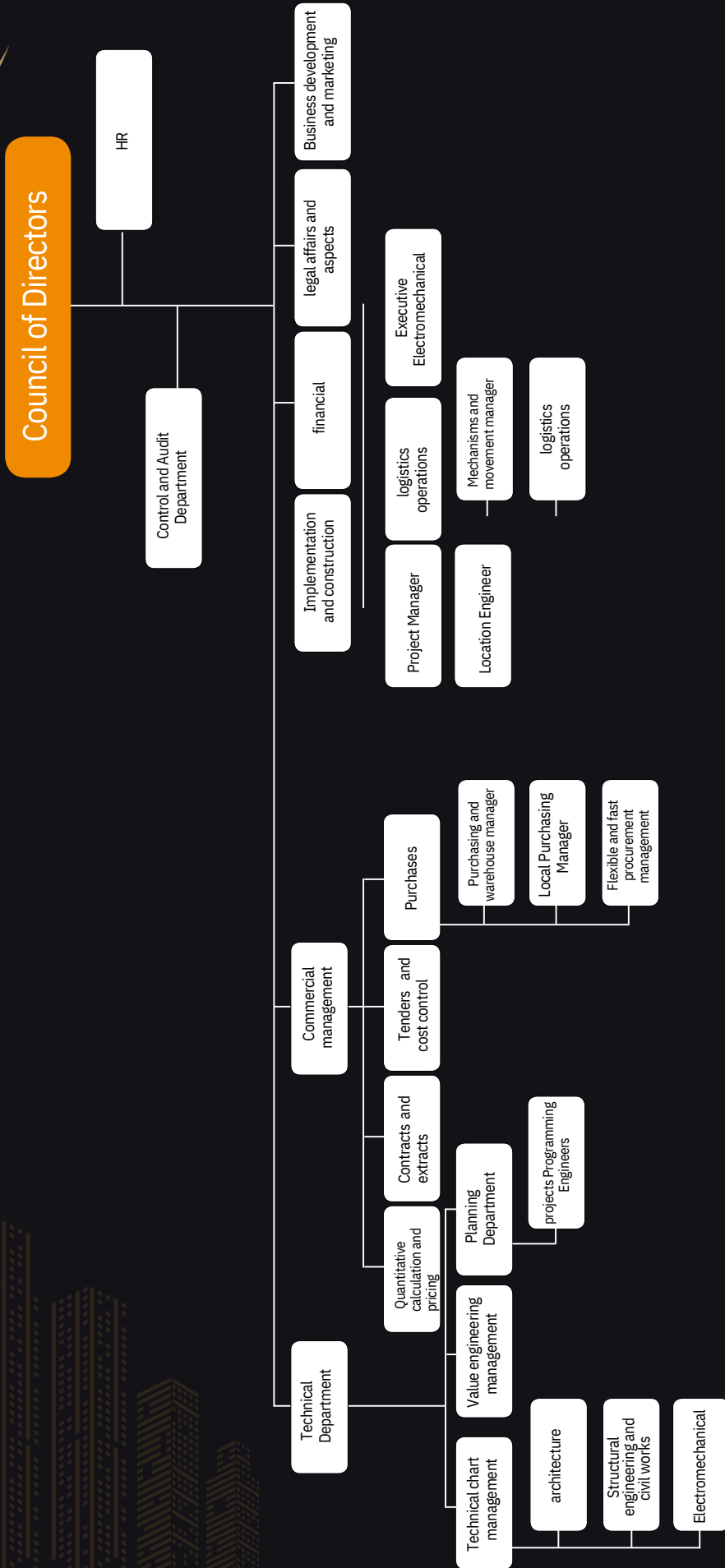
Our investments always focus on meeting the requirements and aspirations of customers and this is explained by the steady increase in the number of customers, success partners and official certificates

Finally, I would like to thank the company's work team, which has always and forever made every effort to make the system a success, and I also thank all the official authorities that have always been the support to overcome all obstacles.



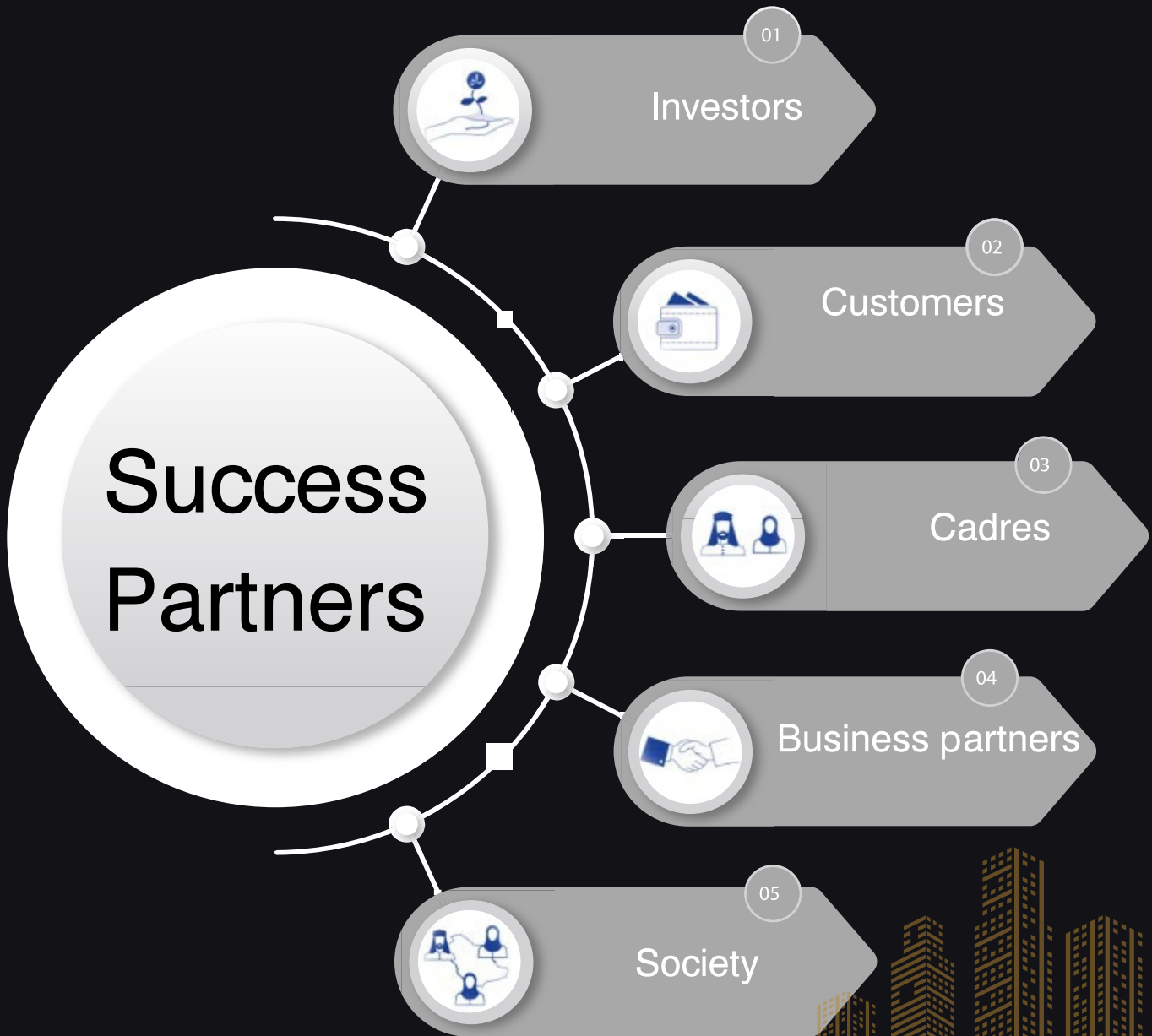


Organizational Chart





Success Partners





KENANA GROUP CONTRACTING

Our Partners





Our Vision

1

To continue our remarkable progress in the field of contracting, to continue to work and give abundantly, to preserve our previous gains, and to strive forward towards keeping pace with the world in the field



Our Mission

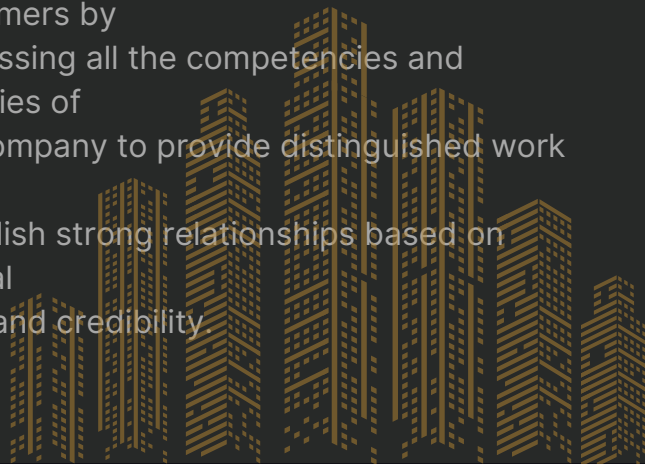
1

Providing the best quality, high-value and distinguished services to our customers in a distinguished working partnership with them based on mutual trust and maintaining their trust and satisfaction by adhering to the foundations, professional standards and quality rules, taking into account our authentic values

Our Goals

1

Maintaining the confidence of our customers by harnessing all the competencies and energies of the company to provide distinguished work and establish strong relationships based on mutual trust and credibility.





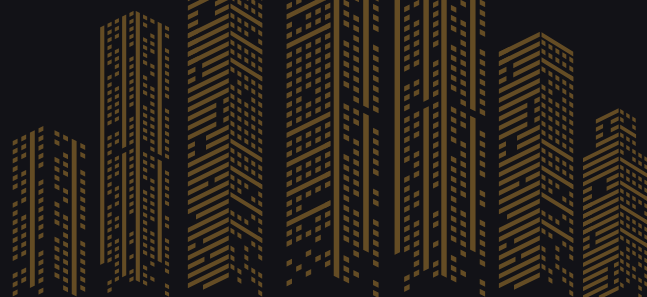
Our Departments

1 Construction Works



Kenana Group has a team of experienced professionals who are committed to delivering projects on time and within budget. The company's focus on safety, quality, and innovation has enabled it to stay ahead of clients.

the competition and maintain its reputation as a reliable and trustworthy partner for its The company's success is a testament to its commitment to excellence and its ability to adapt to changing market conditions





Our Departments

2 Interiors Works

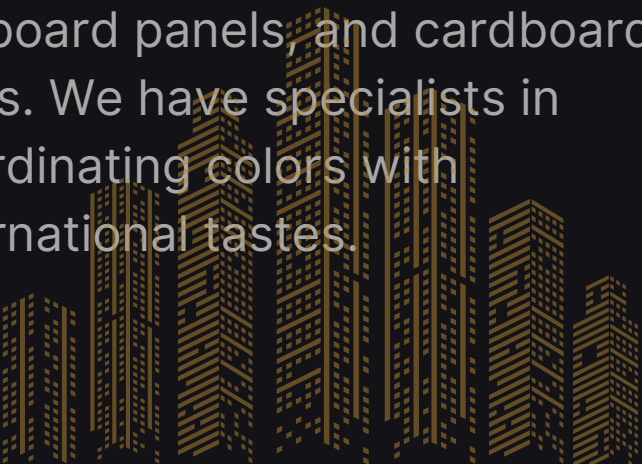


Distinct in the works of interior and exterior decoration, installation of skylights, keyboard panels, and cardboard glass. We have specialists in coordinating colors with international tastes.

Implementation of architectural and construction drawings

3

Distinct in the works of interior and exterior decoration, installation of skylights, keyboard panels, and cardboard glass. We have specialists in coordinating colors with international tastes.





Our Departments

4 Electrical Works



Providing all electrical works such as works of generating stations, public service networks, transformers, lighting, frequency change, infrastructure works, communications and control

Mechanical works

5

Distinct in installing air conditioners, pipelines, sewage, public service networks, and floods for commercial and residential facilities, among others





Our Departments

6 Operating and Maintenance



We do the finishing works to the fullest, including painting and gypsum board works with the best materials





**KENANA GROUP
CONTRACTING
PROJECTS**

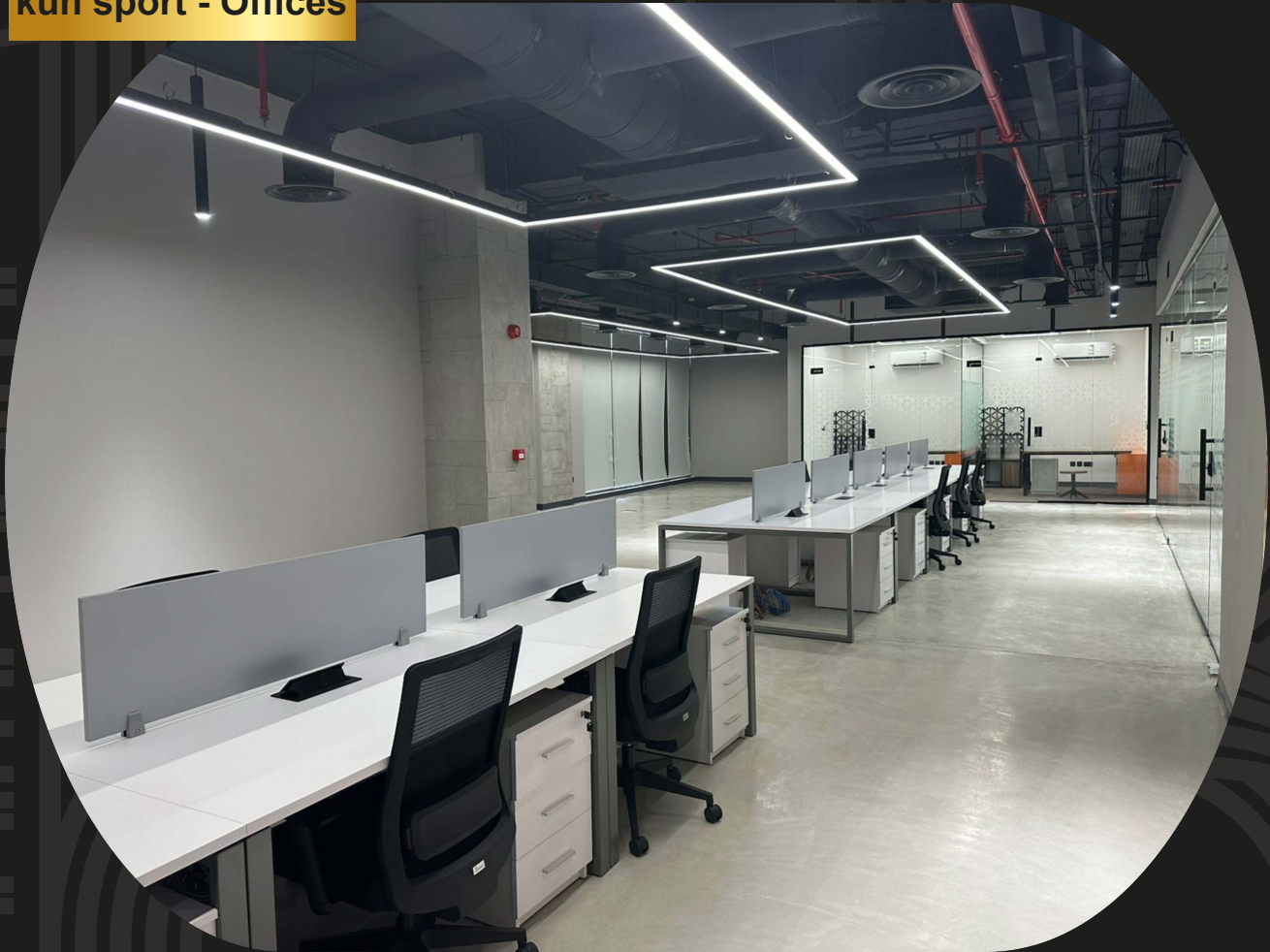
**PASSION
FOR PERFECTION**



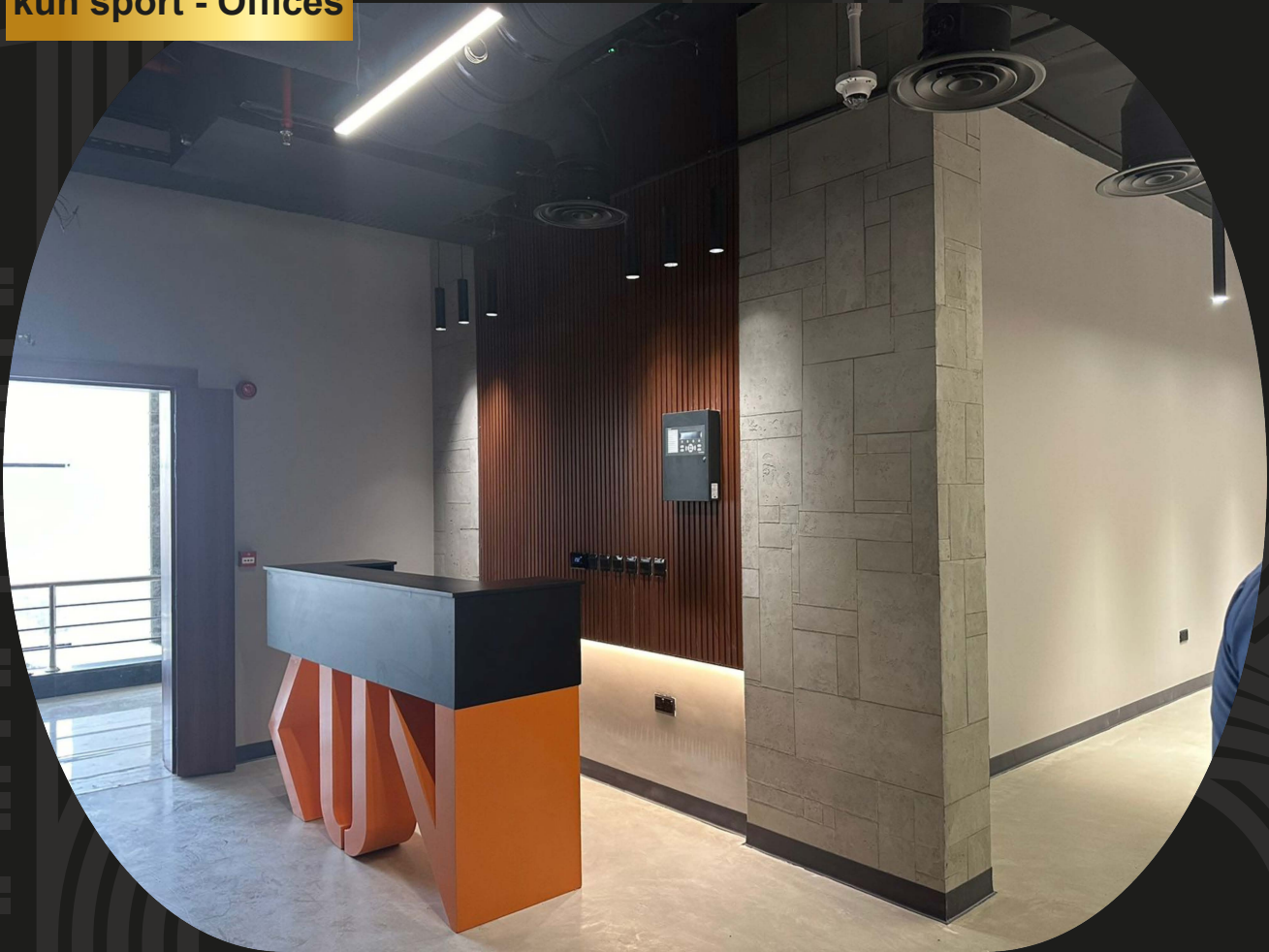
kun sport - Offices



kun sport - Offices



kun sport - Offices



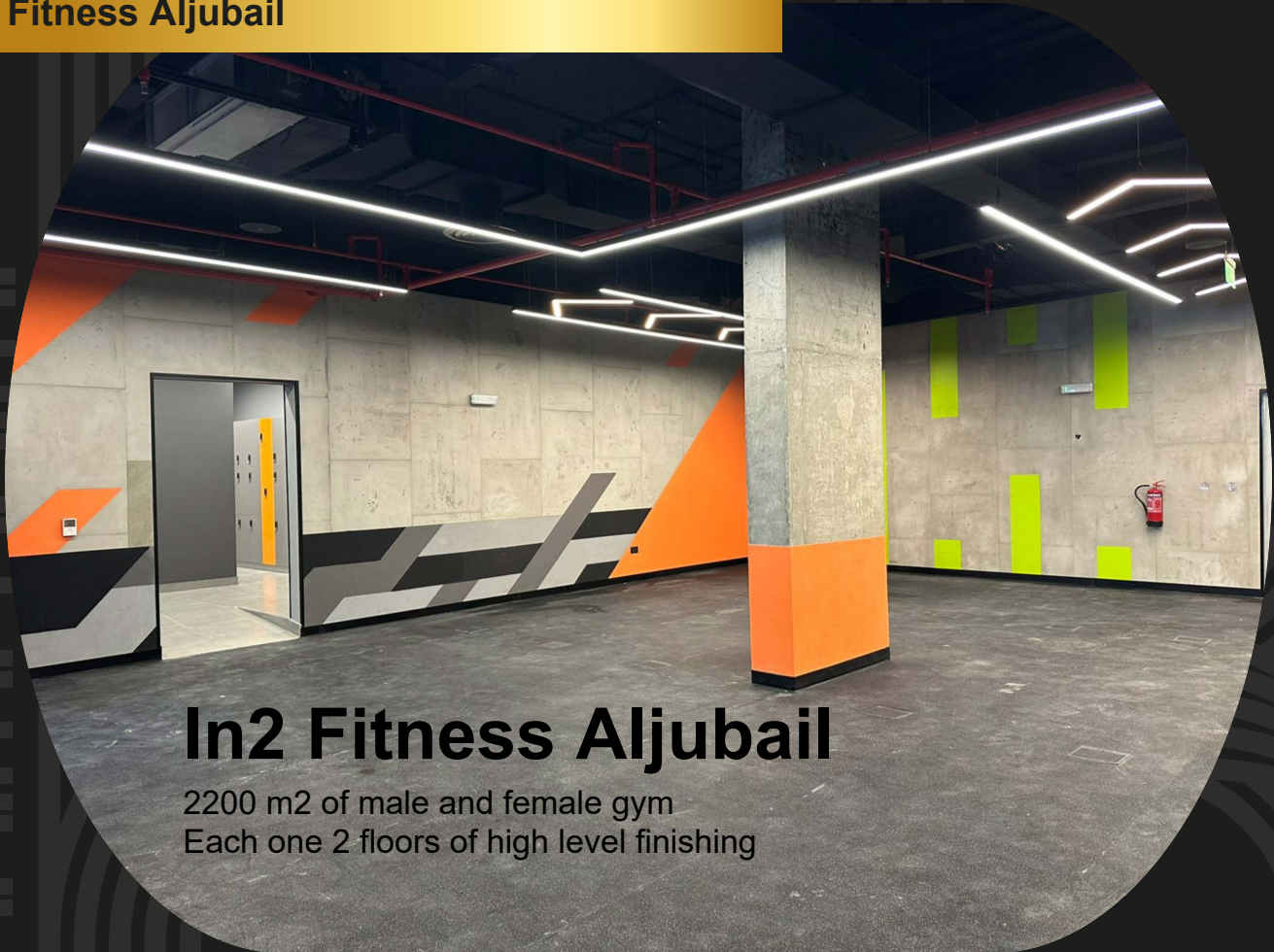
kun sport - Offices



kun sport - Offices



In2 Fitness Aljubail



In2 Fitness Aljubail

2200 m2 of male and female gym
Each one 2 floors of high level finishing

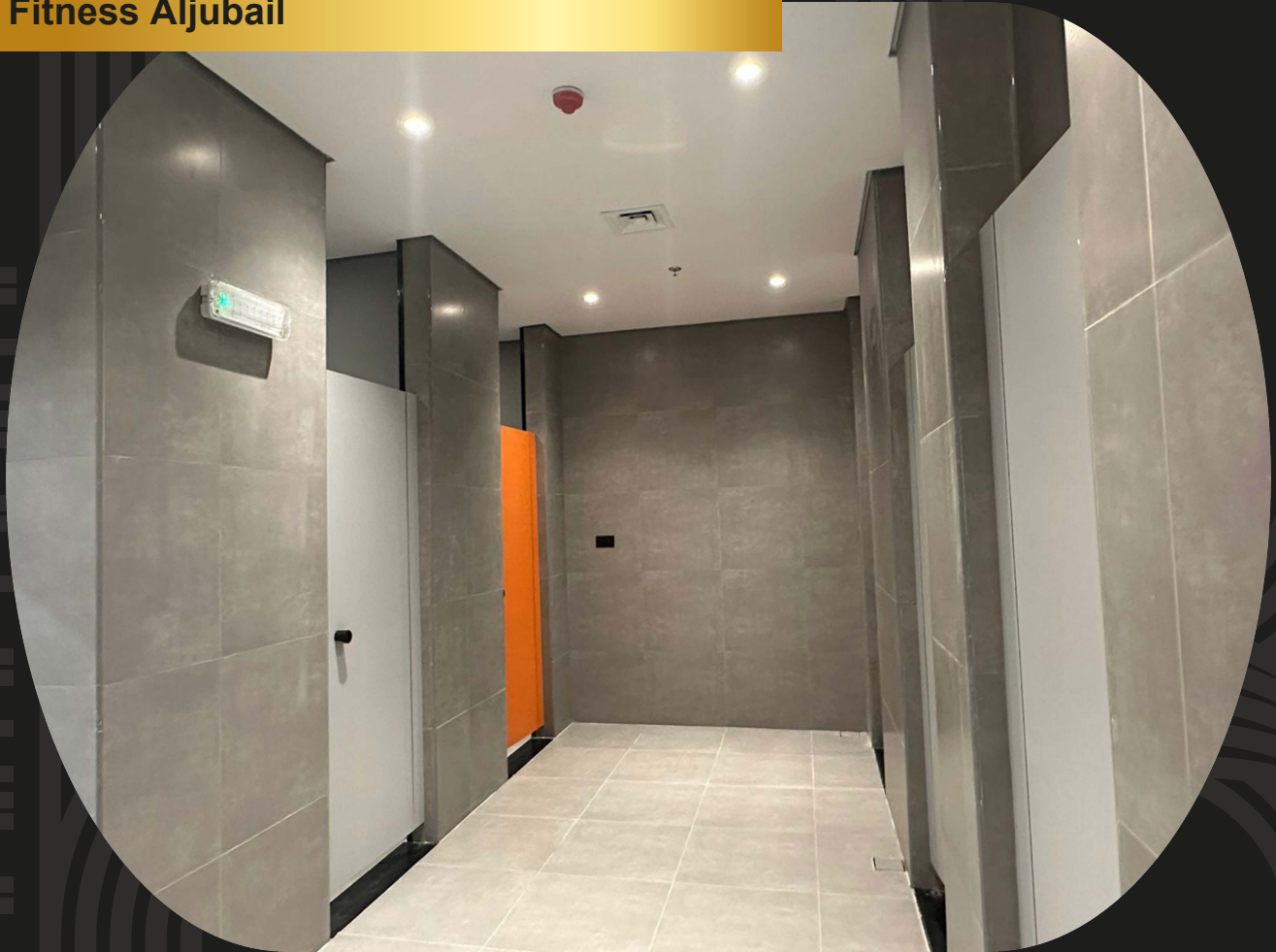
In2 Fitness Aljubail



In2 Fitness Aljubail



In2 Fitness Aljubail



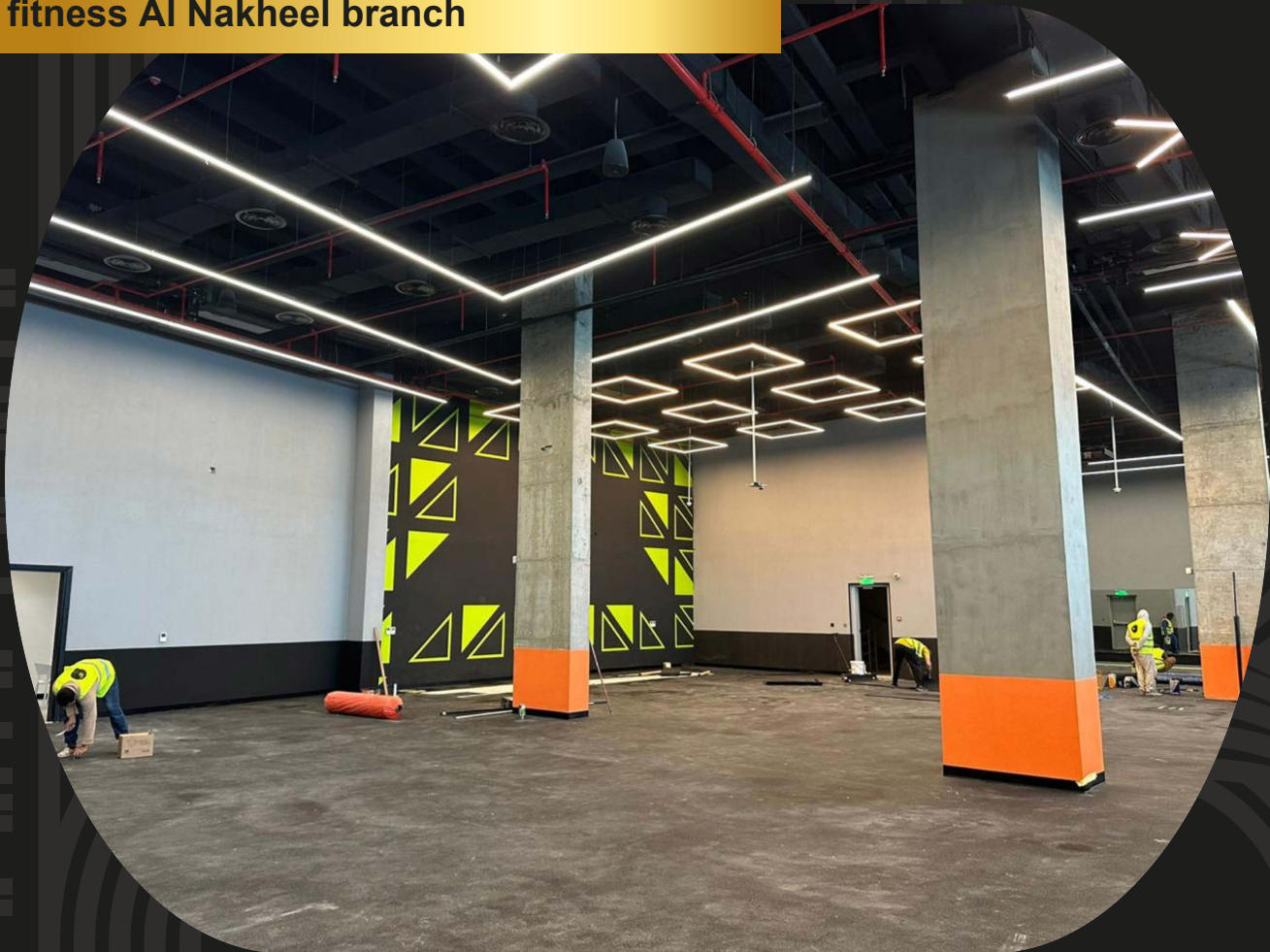
In2 fitness Al Nakheel branch

In2 fitness Al Nakheel branch

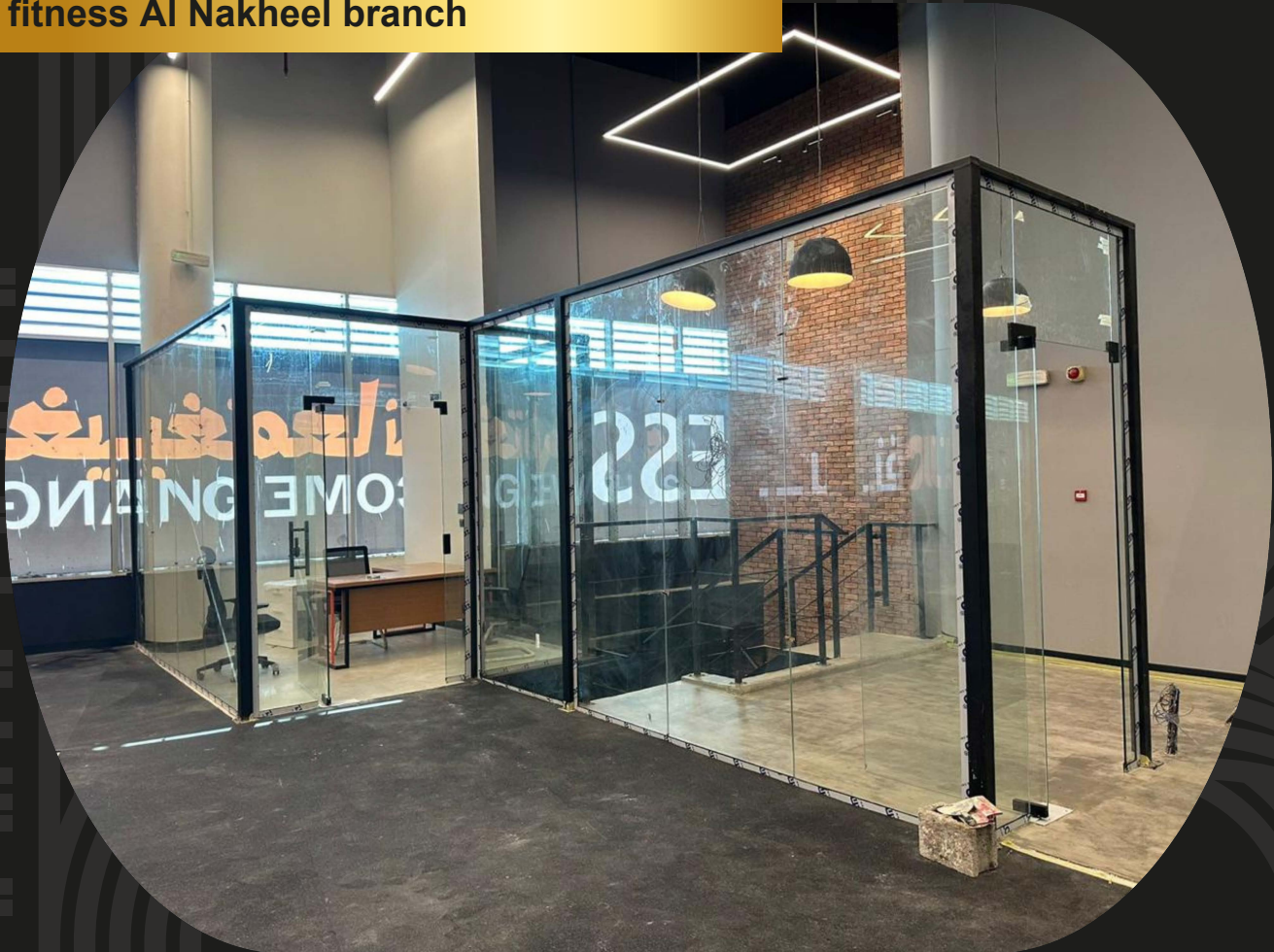


2300 m2 of male and female gym
Each one 2 floors of high level finishing

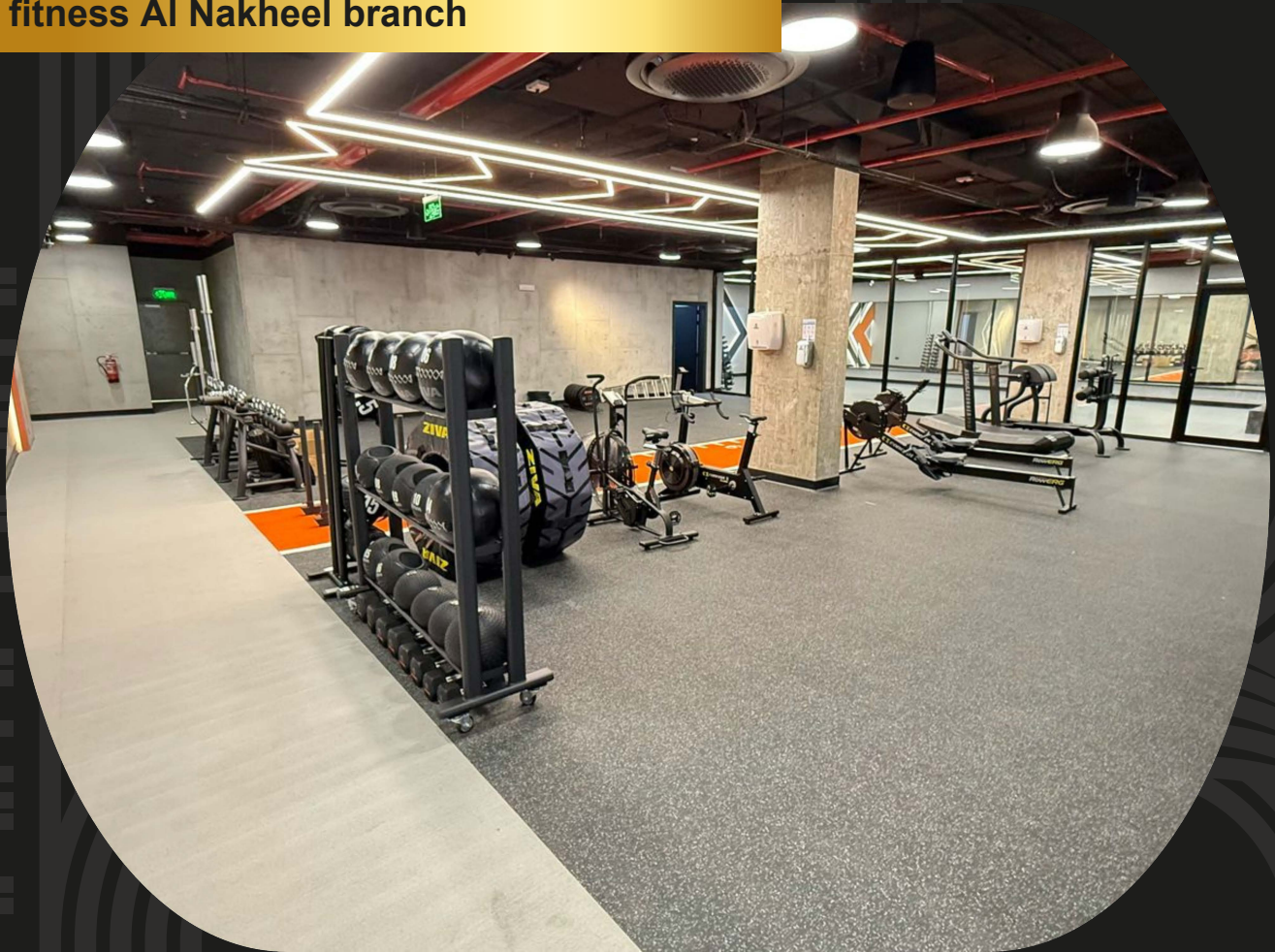
In2 fitness Al Nakheel branch



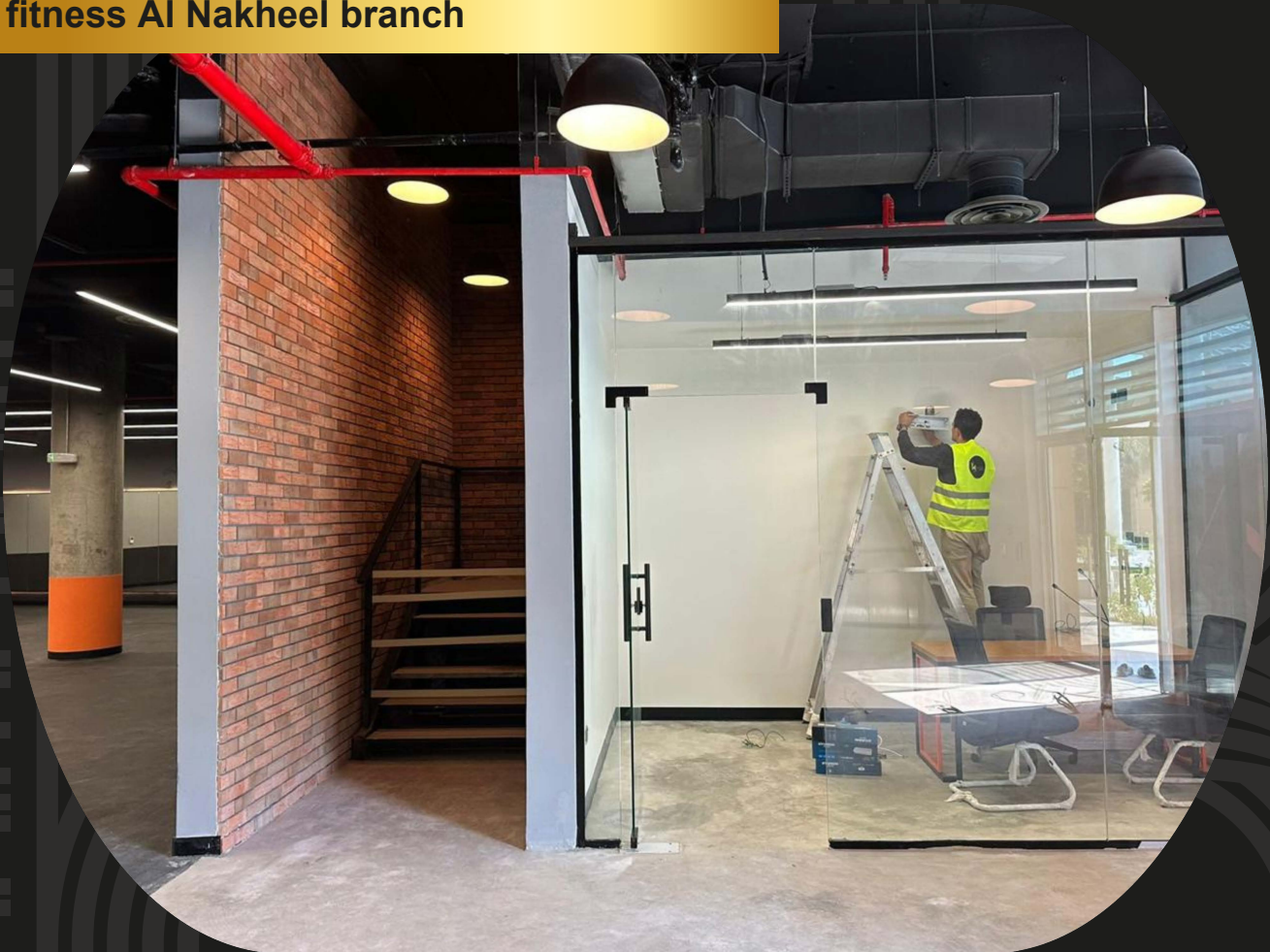
In2 fitness Al Nakheel branch



In2 fitness Al Nakheel branch



In2 fitness Al Nakheel branch



In2 fitness Al Nakheel branch



In2 fitness Al Nakheel branch



Fitness Time - Alsalam - Riyadh



Fitness Time -Alsalam - Riyadh



Fitness Time - Alsalam - Riyadh



Liter Station Almorsalat



Fitness Time - Alsalam - Riyadh



Twisted mind . Bulivard city



Twisted mind . Bulivard city

1900 m 2 of mezzanine floor

Steel structures building and Finishing

Twisted mind . Bulivard city



Twisted mind . Bulivard city



Twisted mind . Bulivard city



Twisted mind . Bulivard city



Twisted mind . Bulivard city



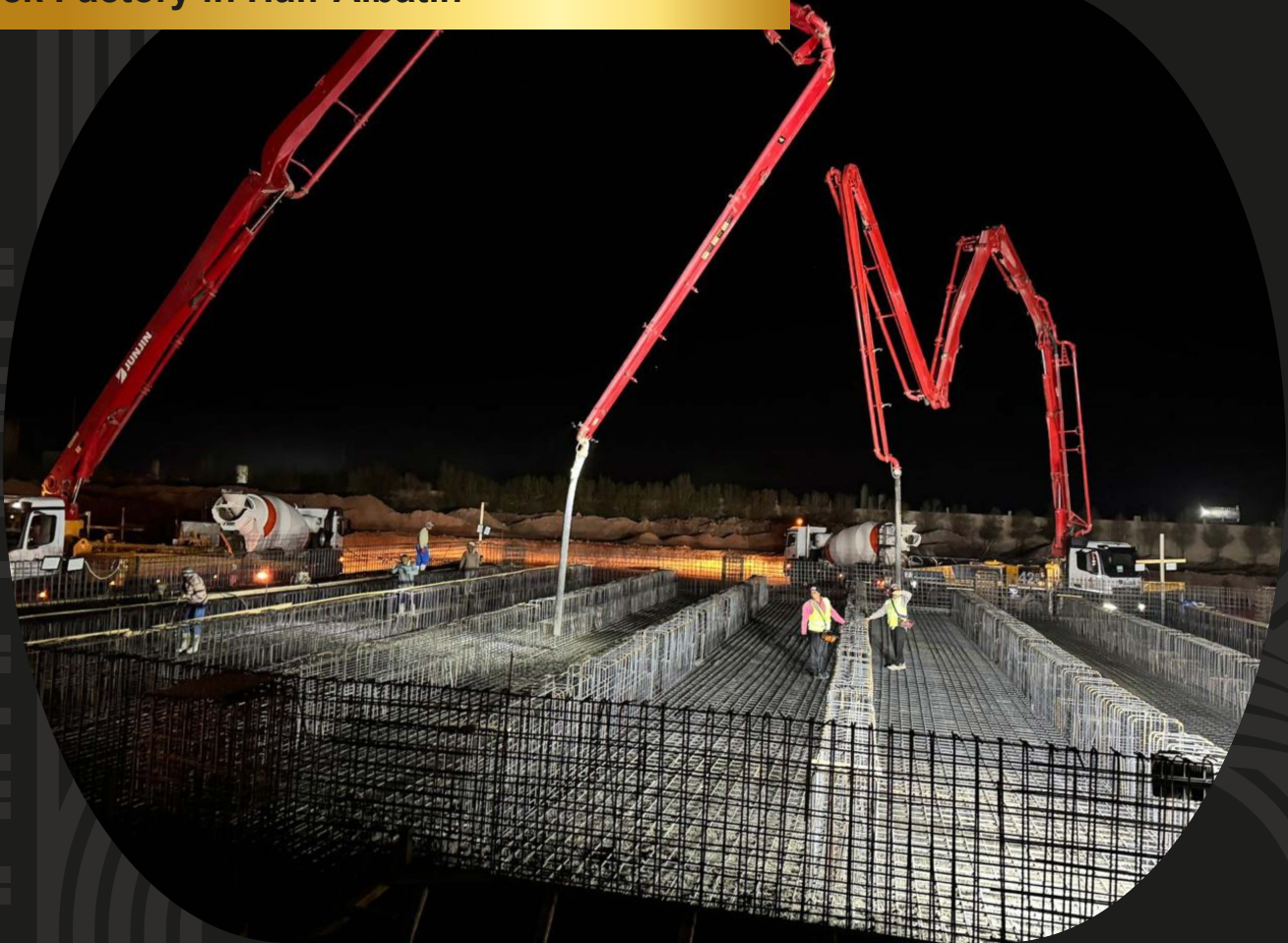
Block Factory in Hafr Albatin



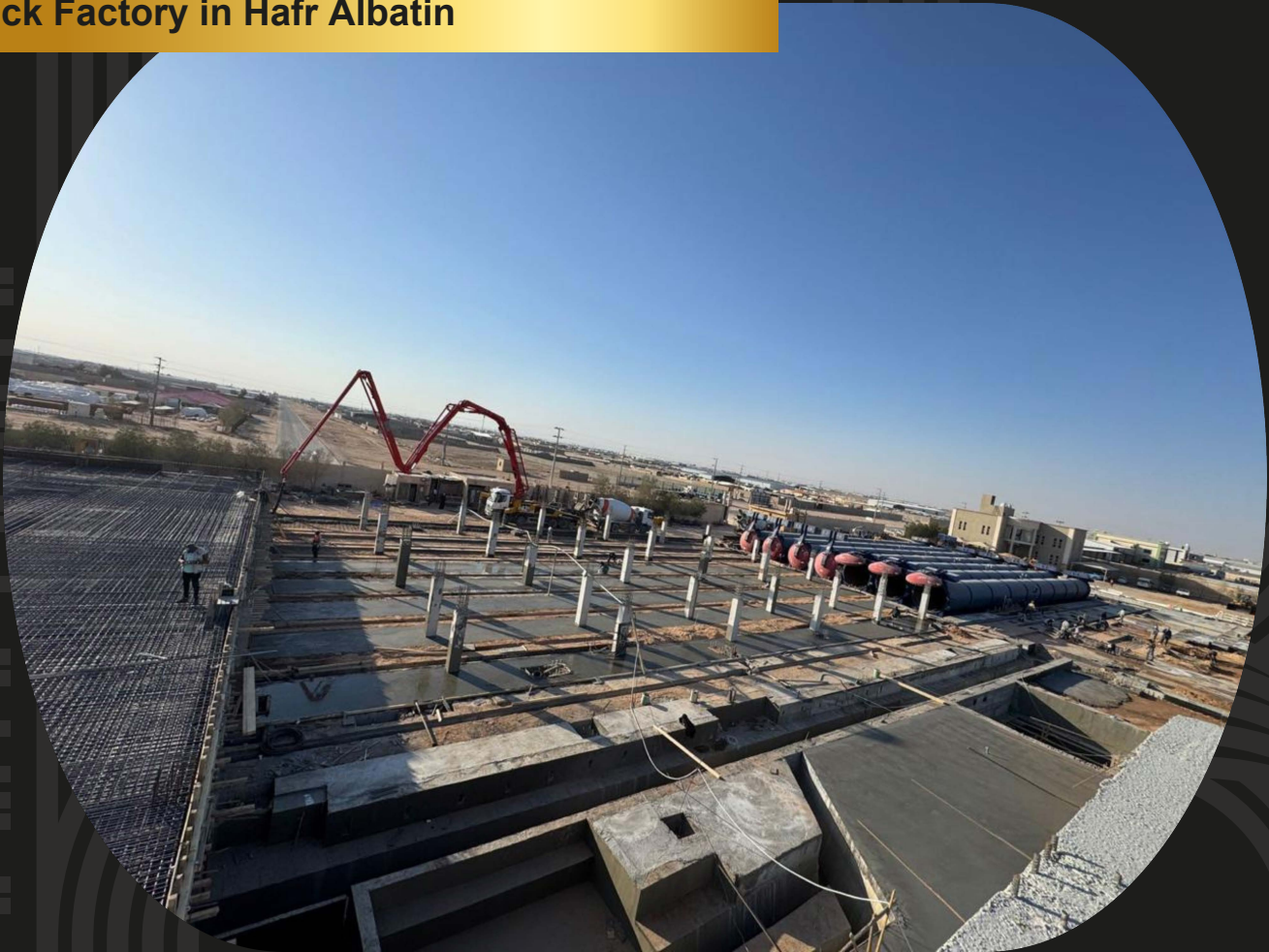
Block Factory in Hafr Albatin

12000 m² of concrete and steel structures building

Block Factory in Hafr Albatin



Block Factory in Hafr Albatin



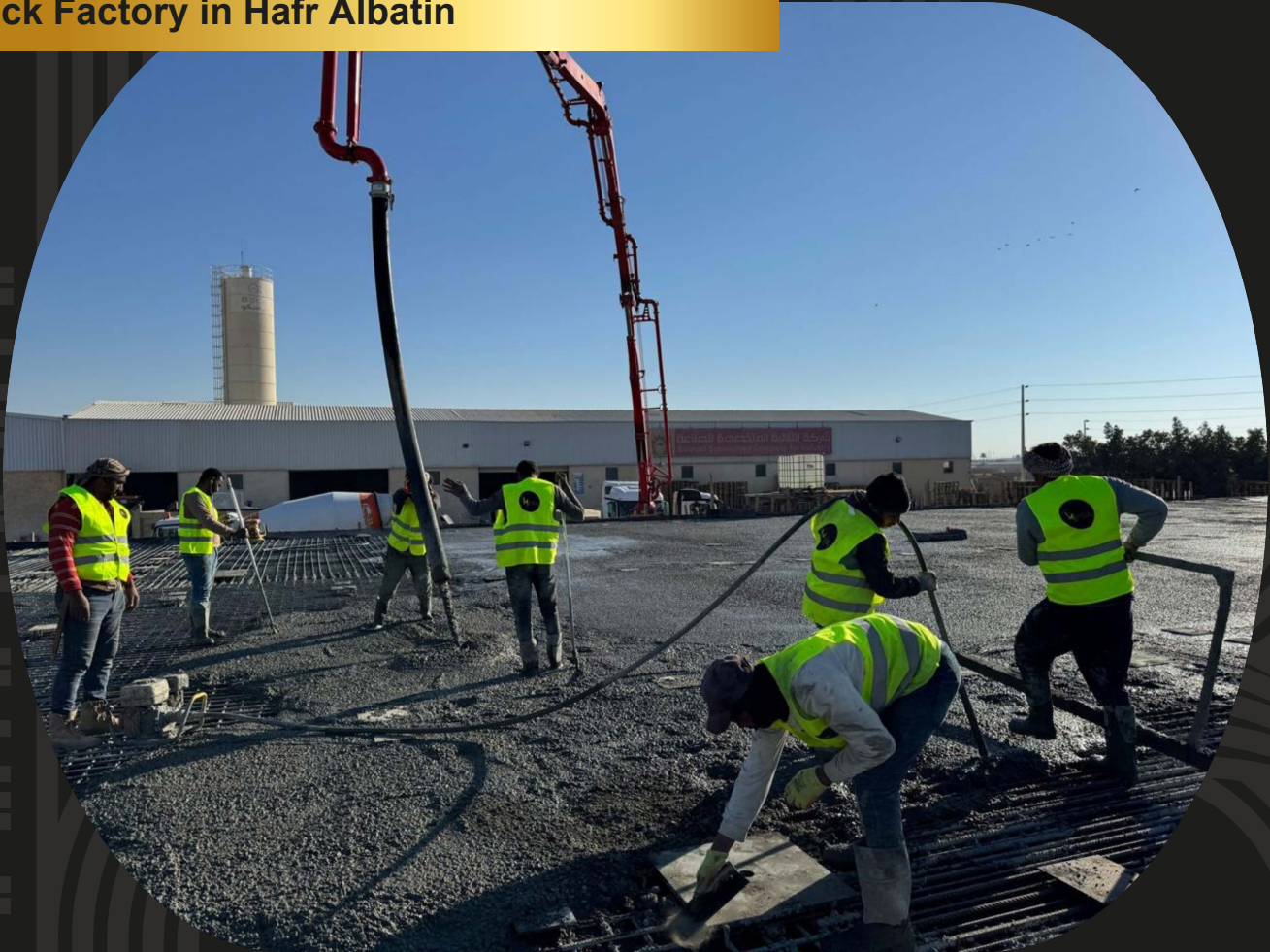
Block Factory in Hafr Albatin



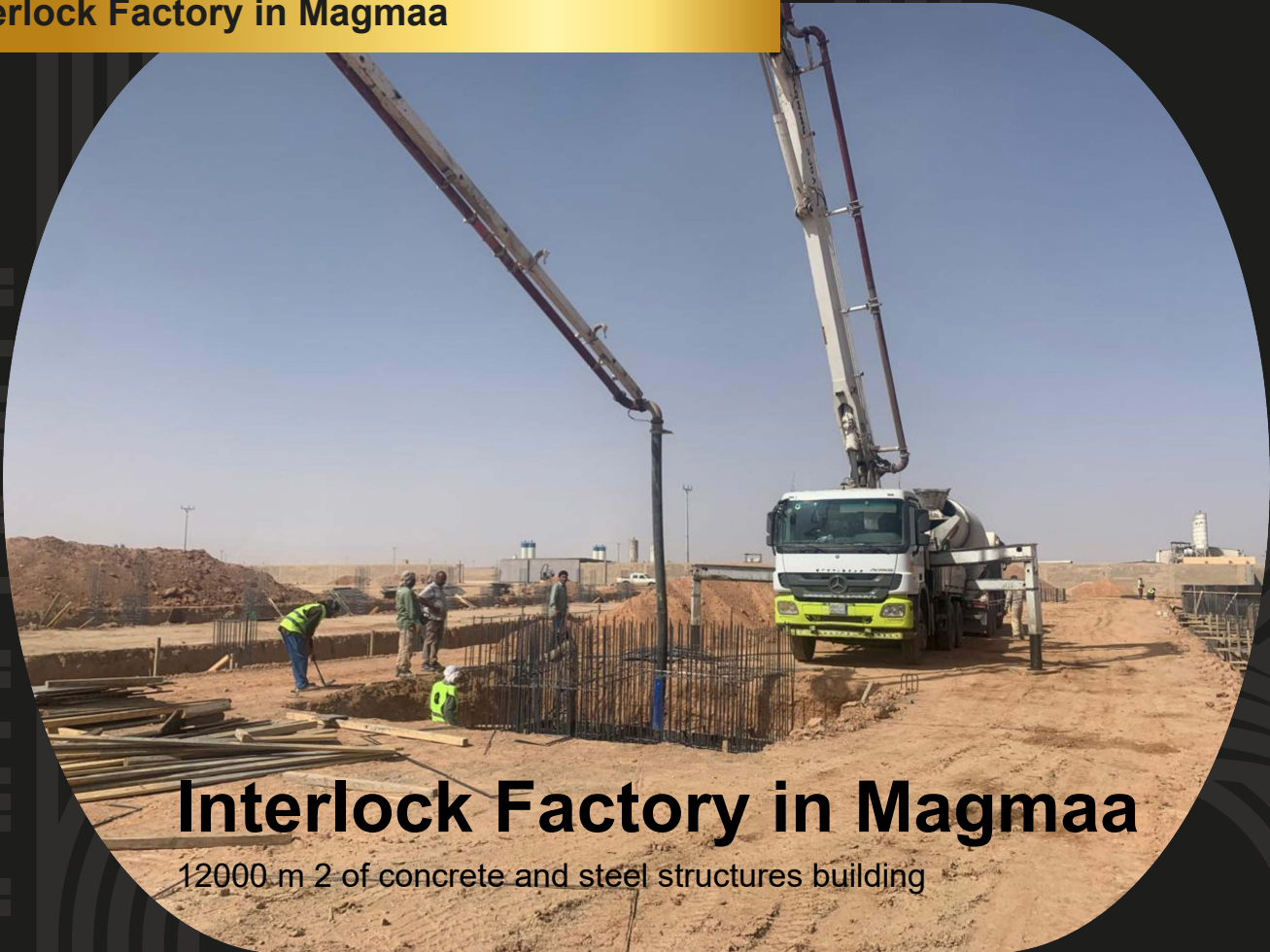
Block Factory in Hafr Albatin



Block Factory in Hafr Albatin



Interlock Factory in Magmaa



Interlock Factory in Magmaa

12000 m² of concrete and steel structures building

Interlock Factory in Magmaa



Interlock Factory in Magmaa



Interlock Factory in Magmaa



Interlock Factory in Magmaa



Interlock Factory in Magmaa

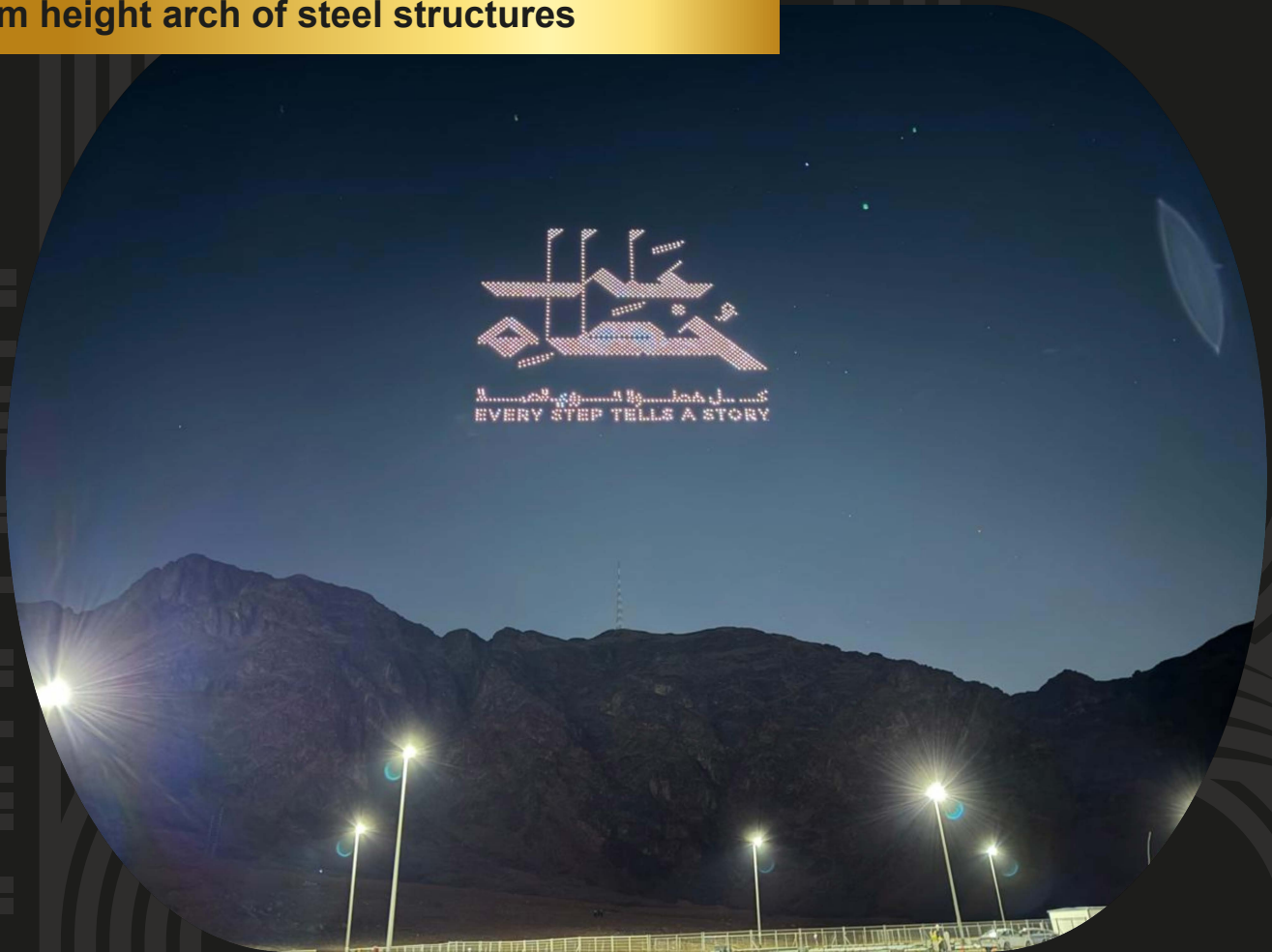


18 m height arch of steel structures

18 m height arch of steel structures



18 m height arch of steel structures



18 m height arch of steel structures



18 m height arch of steel structures



Aslak Factory

A 6000m² of Steel hanger with a 2 ton movable cranes , the Project duration 75 days started from excavation date.



ASLAK FACTORY



ASLAK FACTORY



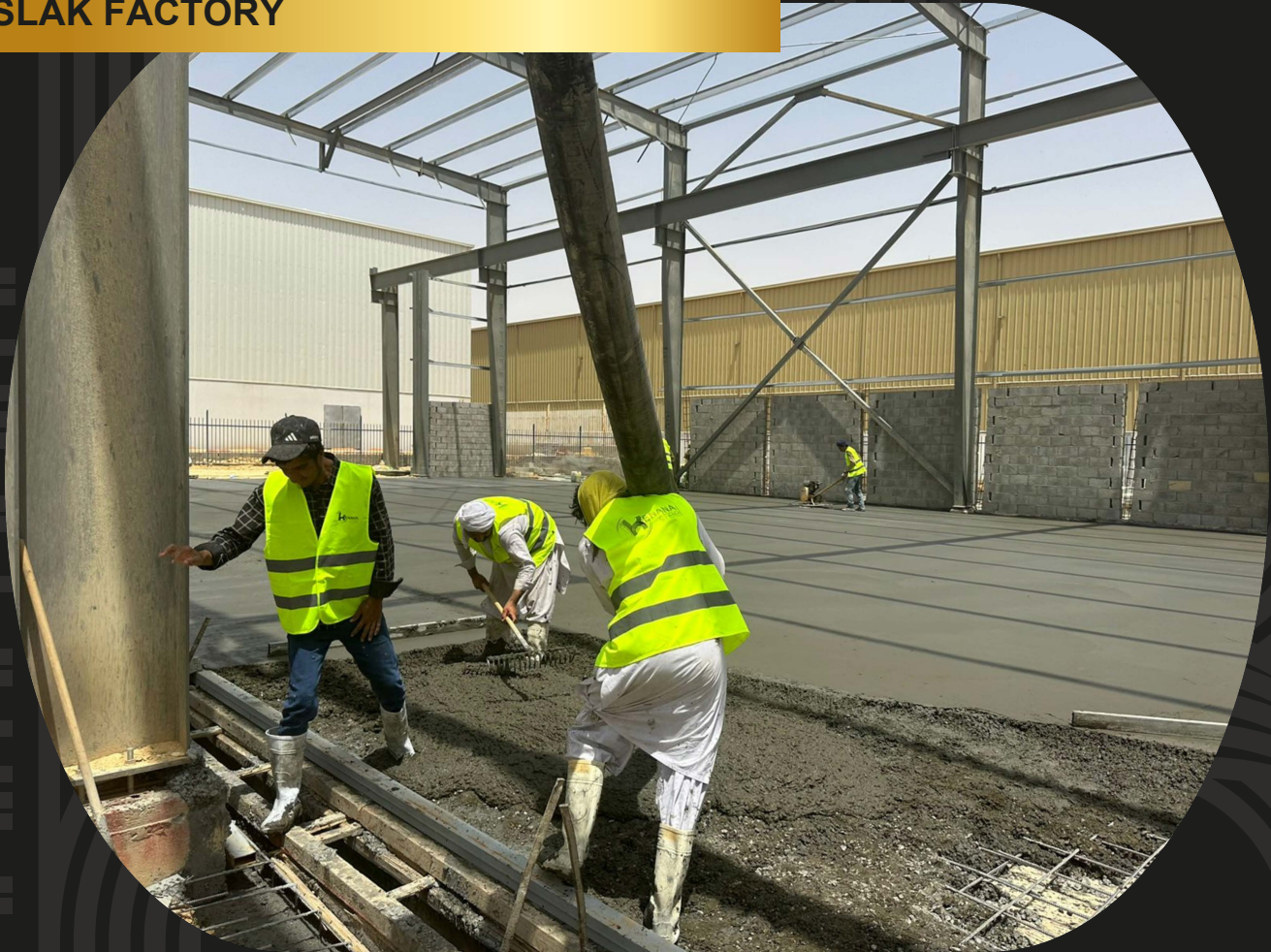
ASLAK FACTORY



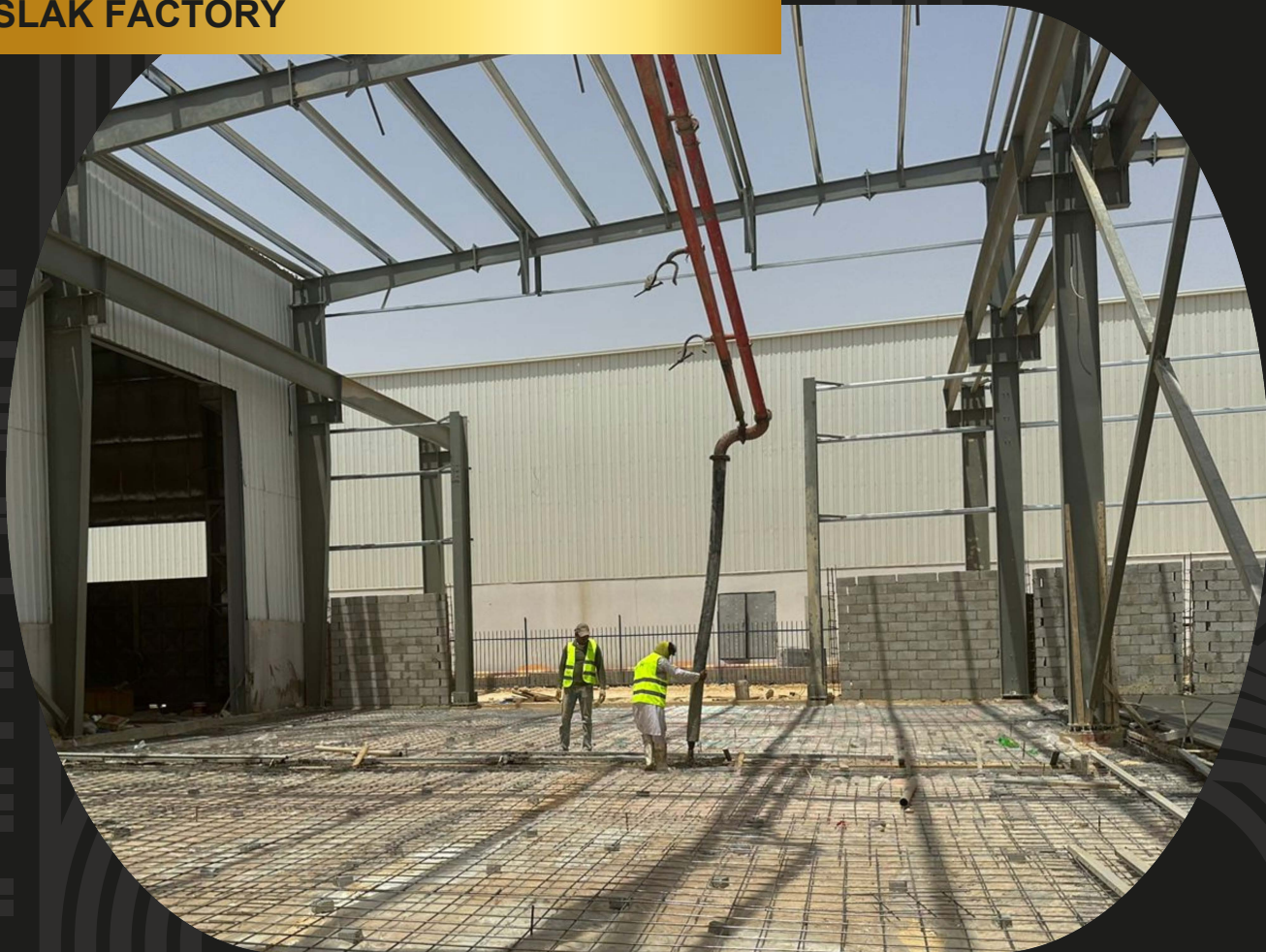
ASLAK FACTORY



ASLAK FACTORY



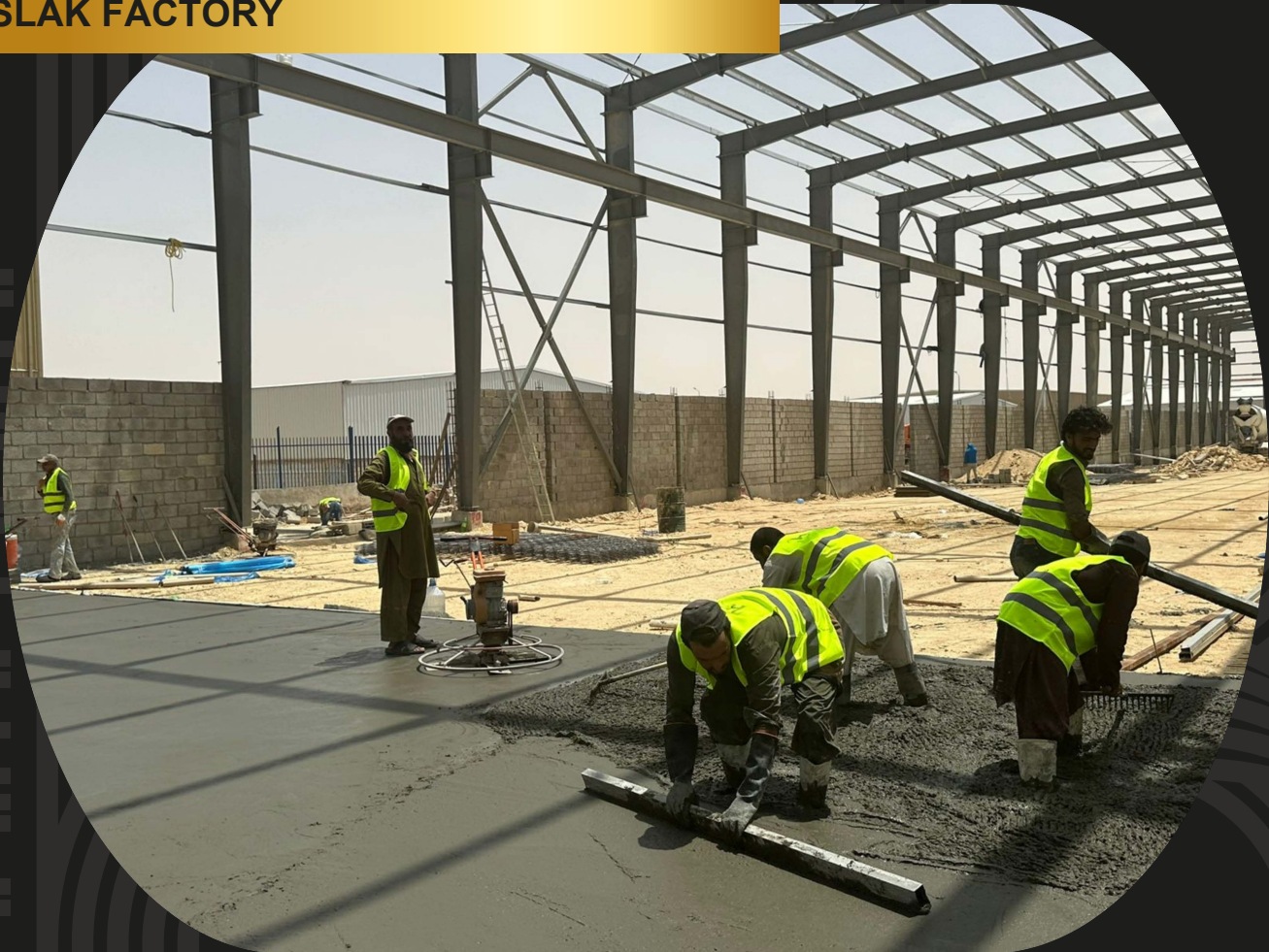
ASLAK FACTORY



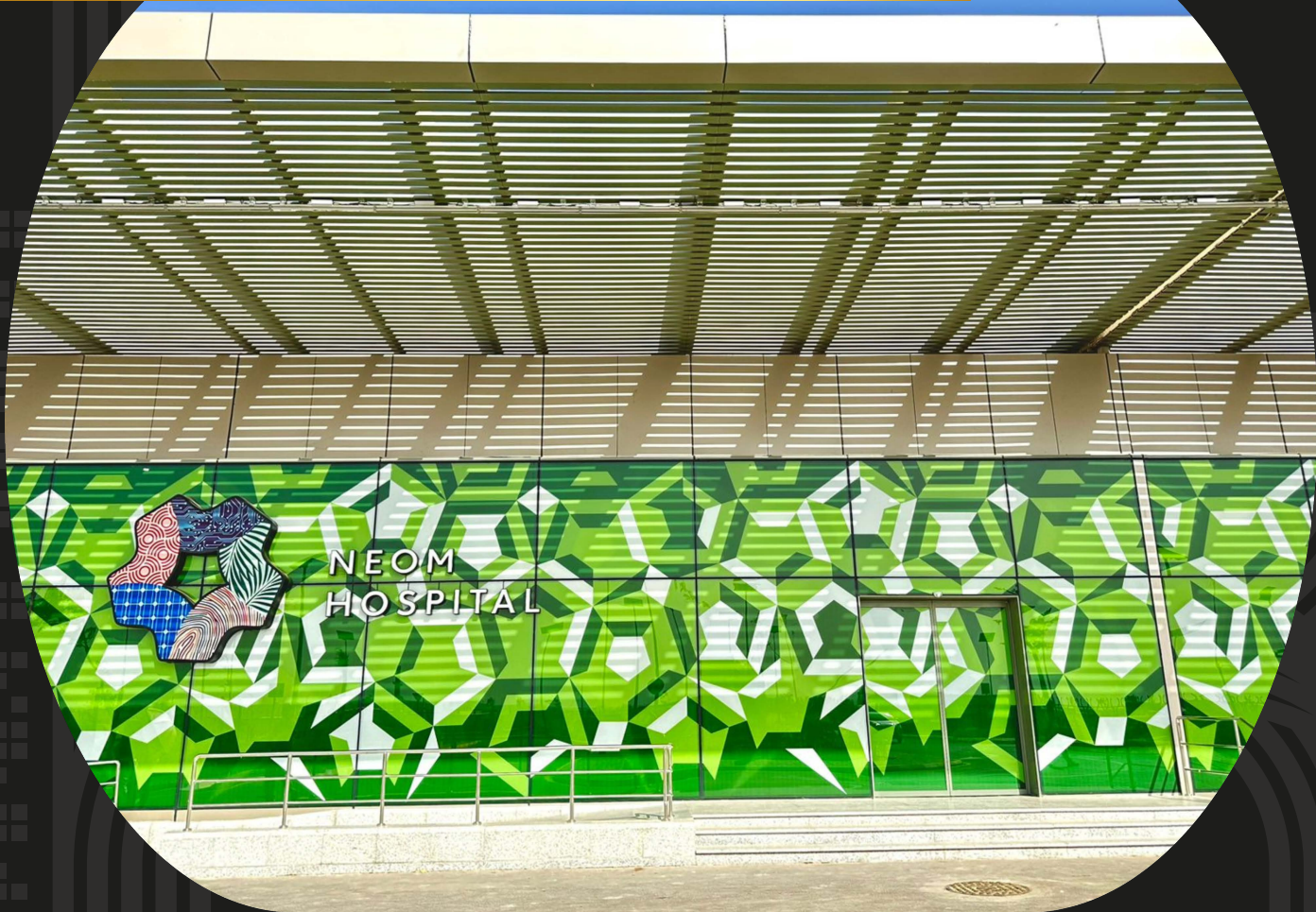
ASLAK FACTORY



ASLAK FACTORY



NEOM HOSPITAL



NEOM HOSPITAL



NEOM HOSPITAL



NEOM HOSPITAL



Grand Plaza Jazan



Grand Plaza Jazan



Grand Plaza Jazan



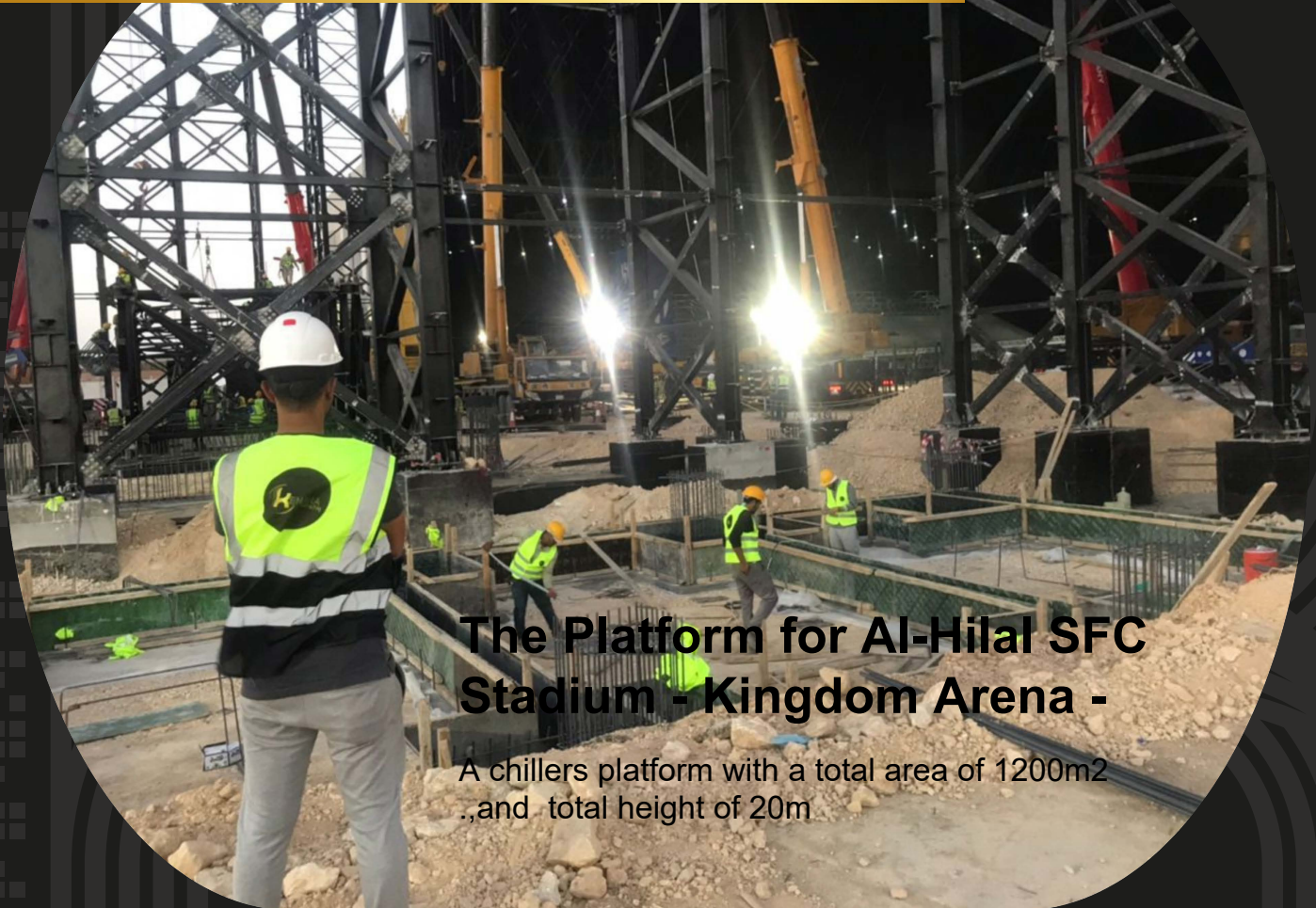
Grand Plaza Jazan



Grand Plaza Jazan



The Platform for Al-Hilal SFC - Stadium - Kingdom Arena



The Platform for Al-Hilal SFC Stadium - Kingdom Arena -

A chillers platform with a total area of 1200m²
,and total height of 20m

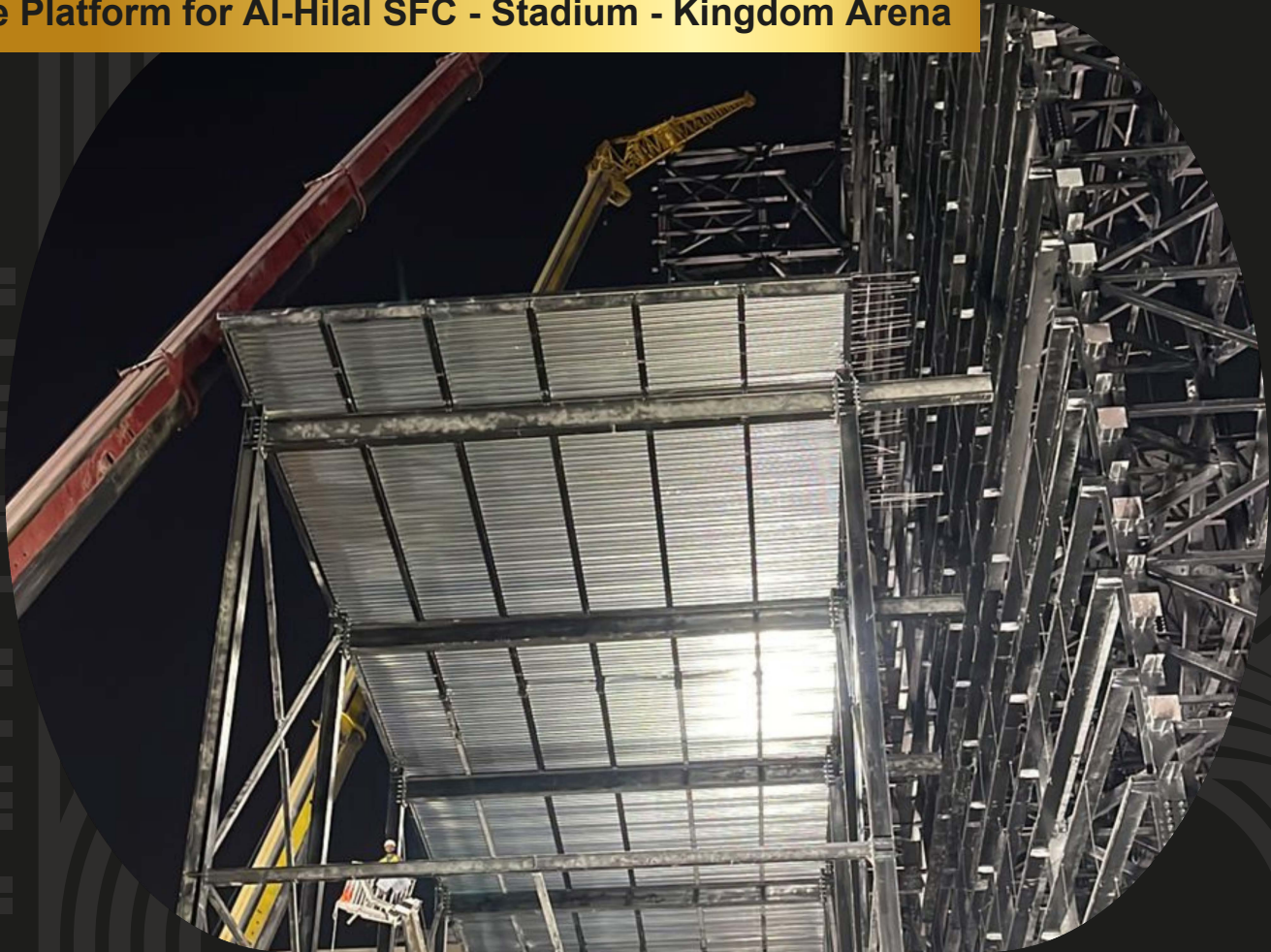
The Platform for Al-Hilal SFC - Stadium - Kingdom Arena

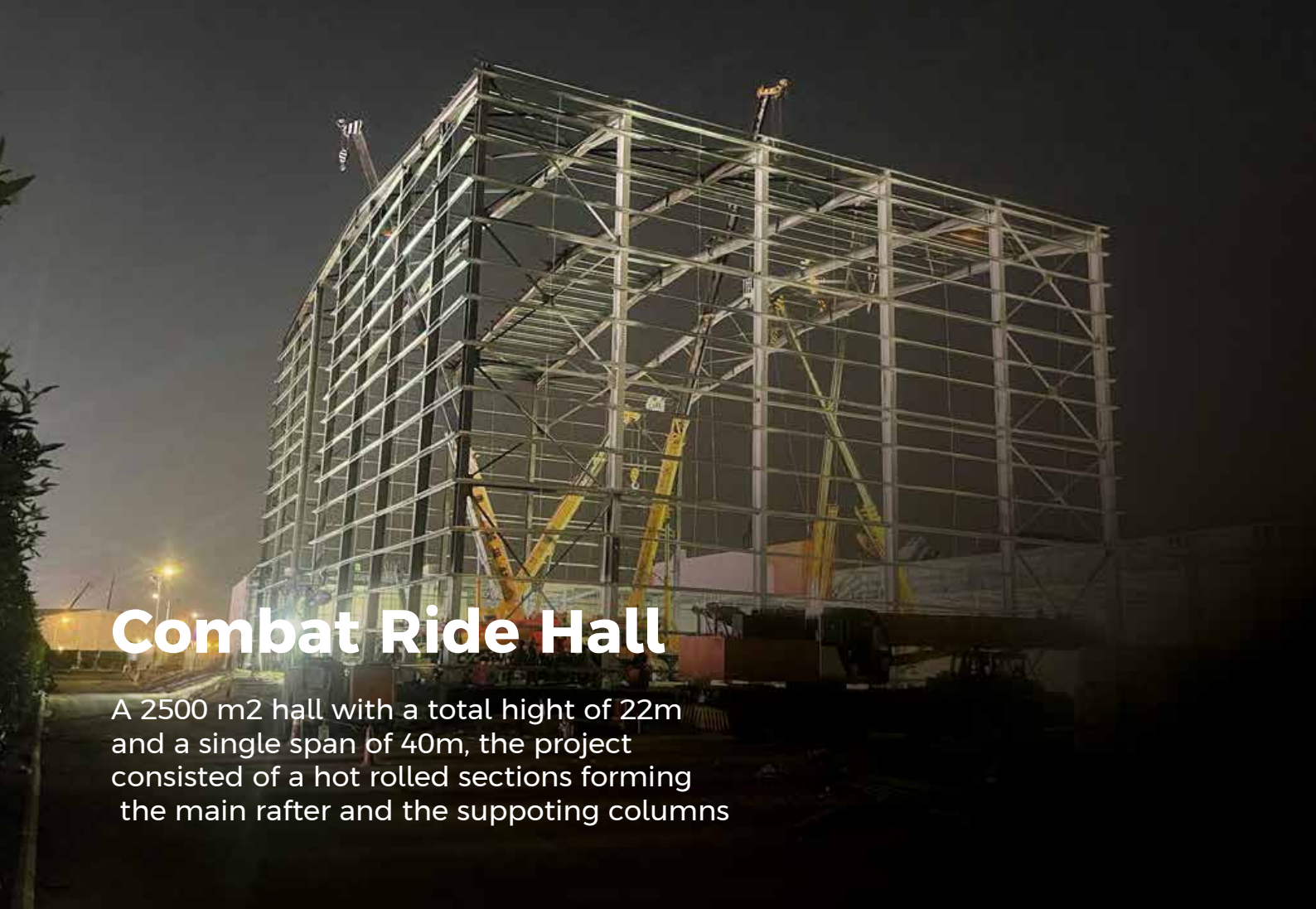


The Platform for Al-Hilal SFC - Stadium - Kingdom Arena



The Platform for Al-Hilal SFC - Stadium - Kingdom Arena





Combat Ride Hall

A 2500 m² hall with a total height of 22m and a single span of 40m, the project consisted of a hot rolled sections forming the main rafter and the supporting columns

Combat Ride Hall



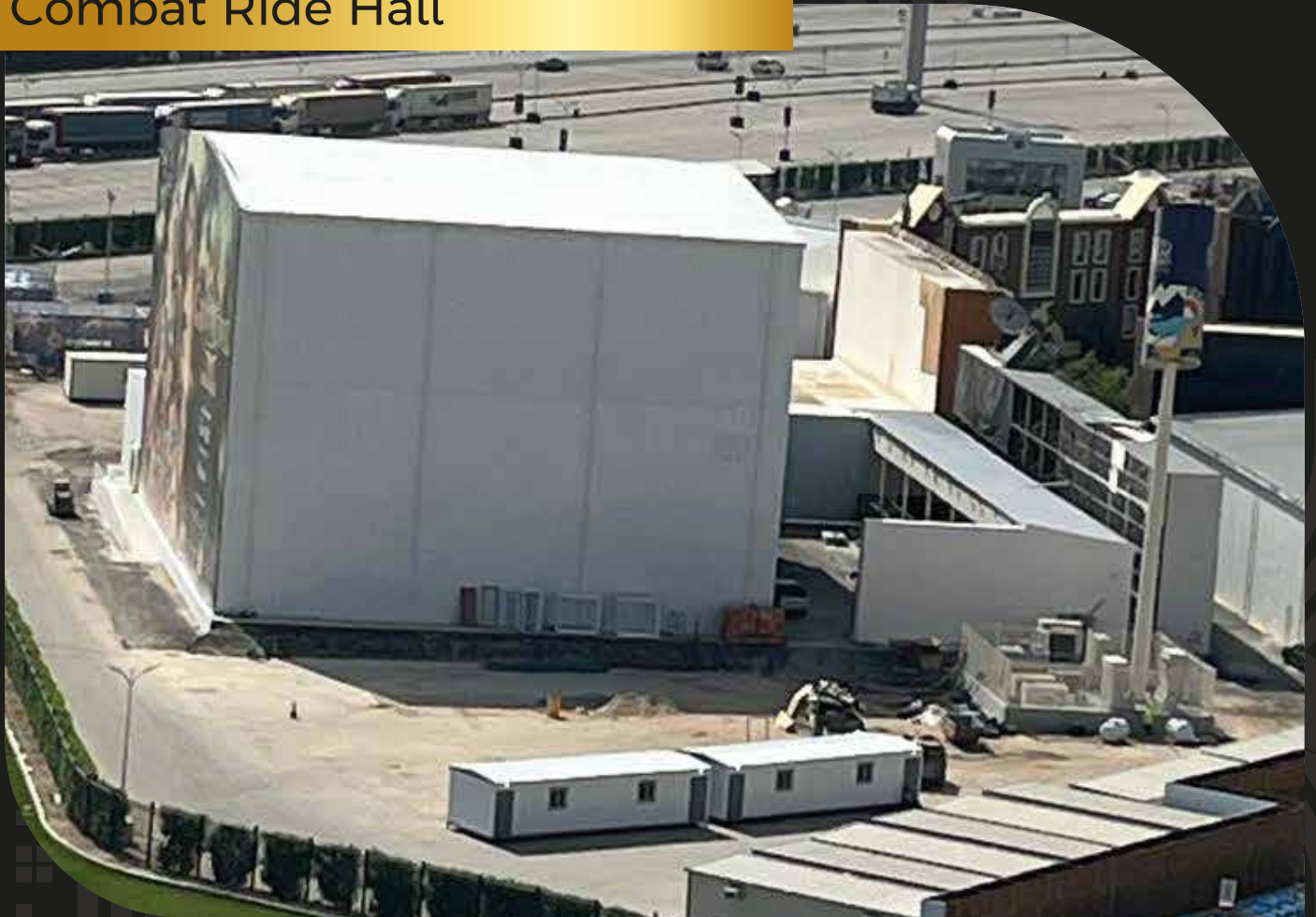
Combat Ride Hall



Combat Ride Hall



Combat Ride Hall



TheThonaeia Factory

TheThonaeia Factory

A block factory consisting of a complicated production lines with a total area of a 12,000 square meter and a total height of 12 m



TheThonaeia Factory



The Thonaeia Factory



Saudi Arabia Gate - Boulevard World

Saudi Arabia Gate - Boulevard World

A 16 m height of a ten towers forming the architectural mode of Saudi Arabia



Saudi Arabia Gate - Boulevard World



Saudi Arabia Gate - Boulevard World



Saudi Arabia Gate - Boulevard World



Saudi Arabia Gate - Boulevard World



Saudi Arabia Gate - Boulevard World



Saudi Arabia Gate - Boulevard World





Liter Station(Alqadisia)

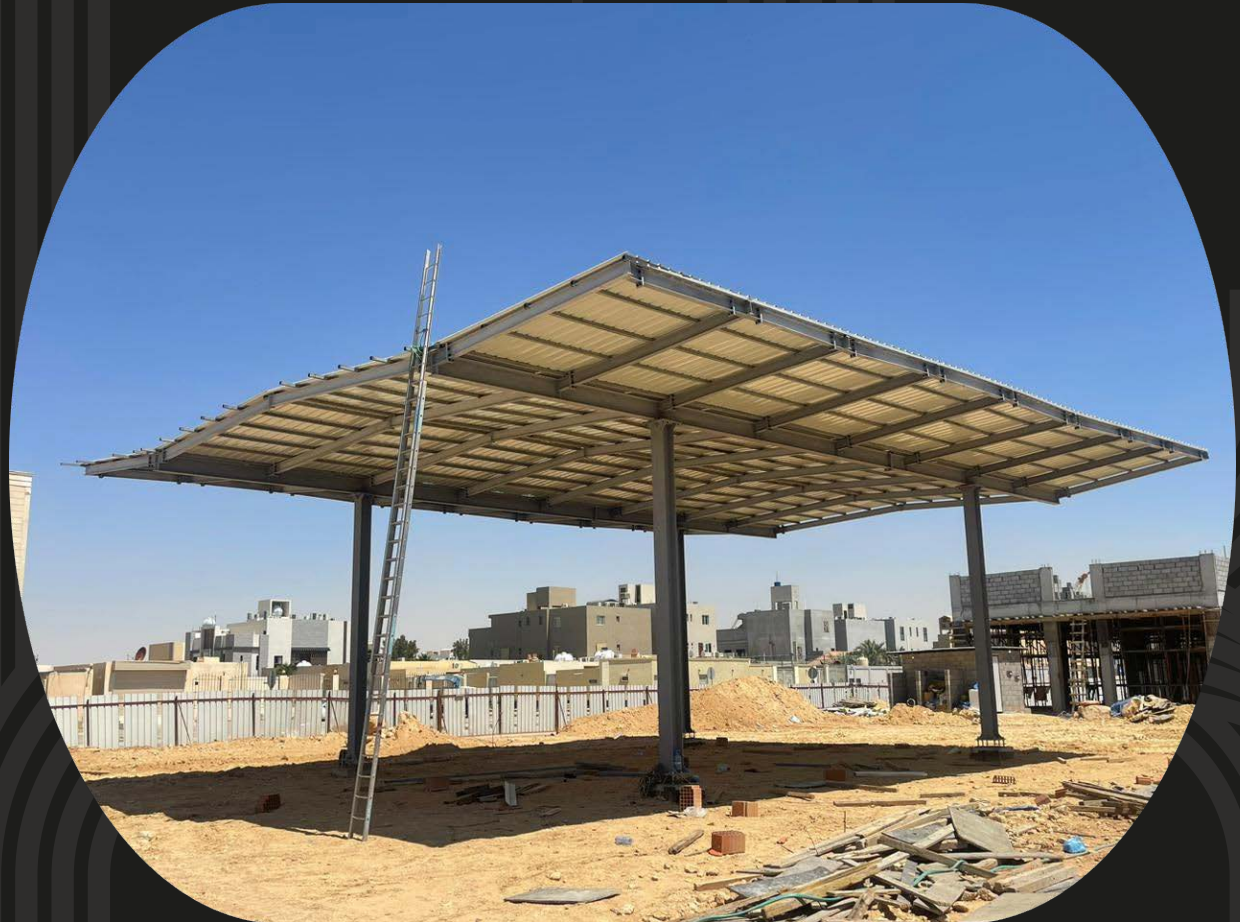
Liter Station





Liter Station (Al-Ared)

Liter Station Al-Ared



Liter Station Al-Ared





Liter Station (Almorsalat)

Liter Station Almorsalat



Liter Station Almorsalat



Liter Station Almorsalat



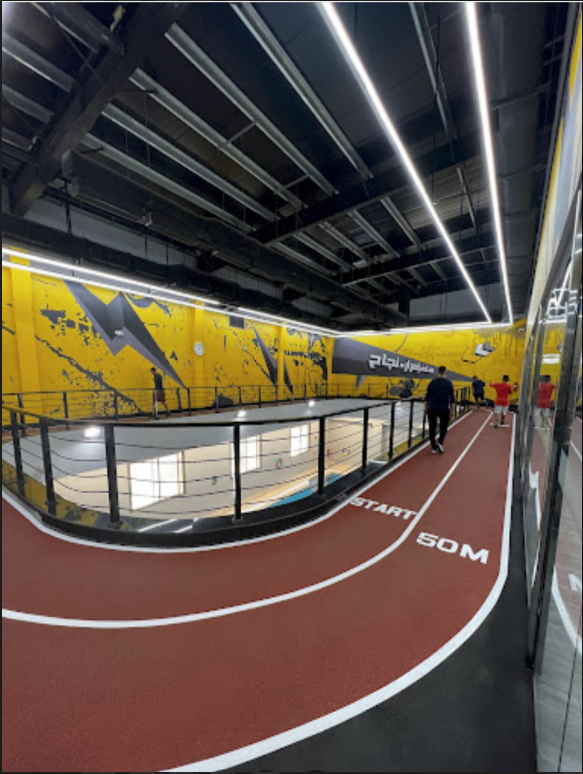
Body Masters In Riyadh



Body Masters Project



Body Masters Project



Body Motions in Ihsaa



Body Motions Project



Body Motions Project





Restaurant Complex (Anas Ibn Malek)

Liter Station



Liter Station





BOULEVARD TELEFERIC GARAGE STATION

PROJECT DESCRIPTION

A 500 M2 GARAGE STATION CONSIST OF A CONCRETE SLAB ON METAL DECK RESTED

THE PROJECT WAS ACCOMPLISHED IN ON A MAIN AND SECONDARY BEAMS, 10 Days

BOULEVARD TELEFERIC GARAGE STATION



BOULEVARD TELEFERIC GARAGE STATION



BOULEVARD TELEFERIC GARAGE STATION





BOULEVARD VERTICAL SCREENS

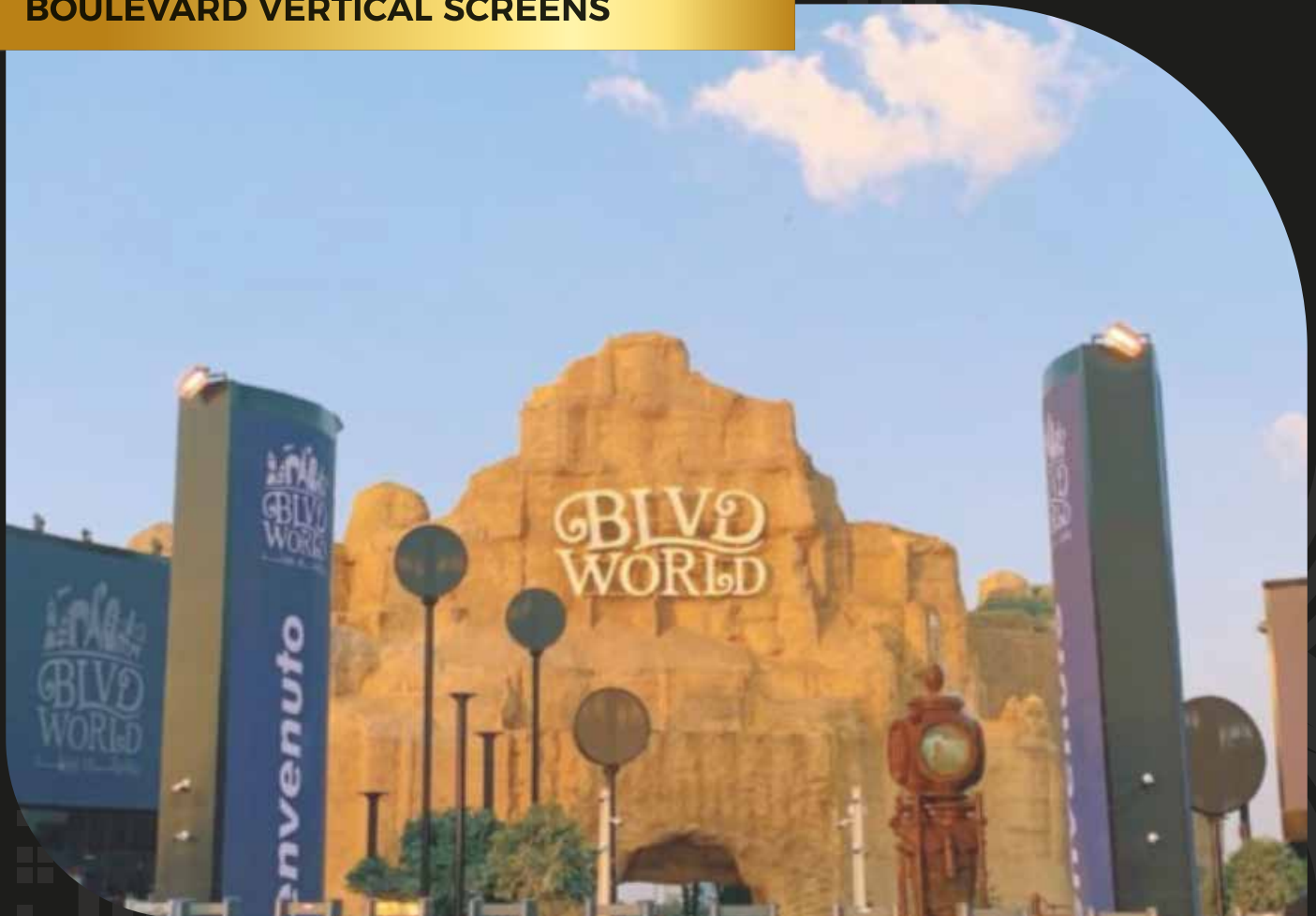
PROJECT DESCRIPTION

EIGHT VERTICAL SCREENS FOR THE MAIN AND SECONDARY ENTRANCES WITH A TOTAL HEIGHT OF 10M FOR THE MAIN ENTRANCE SCREENS AND 7M FOR THE SECONDARY ENTRANCE SCREENS, THE PROJECT WAS ACCOMPLISHED IN 13 DAYS.

BOULEVARD VERTICAL SCREENS



BOULEVARD VERTICAL SCREENS

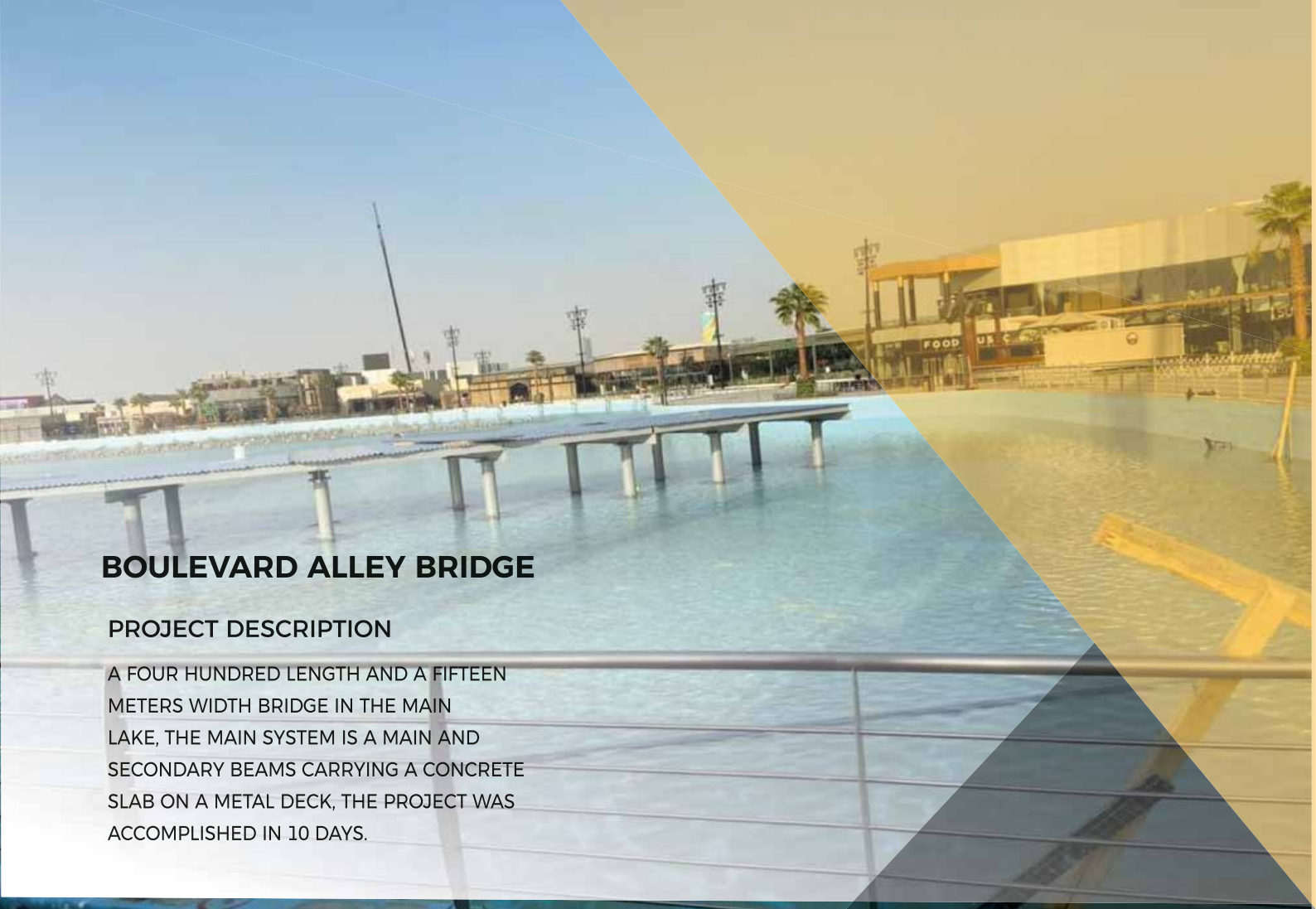


BOULEVARD VERTICAL SCREENS



BOULEVARD VERTICAL SCREENS



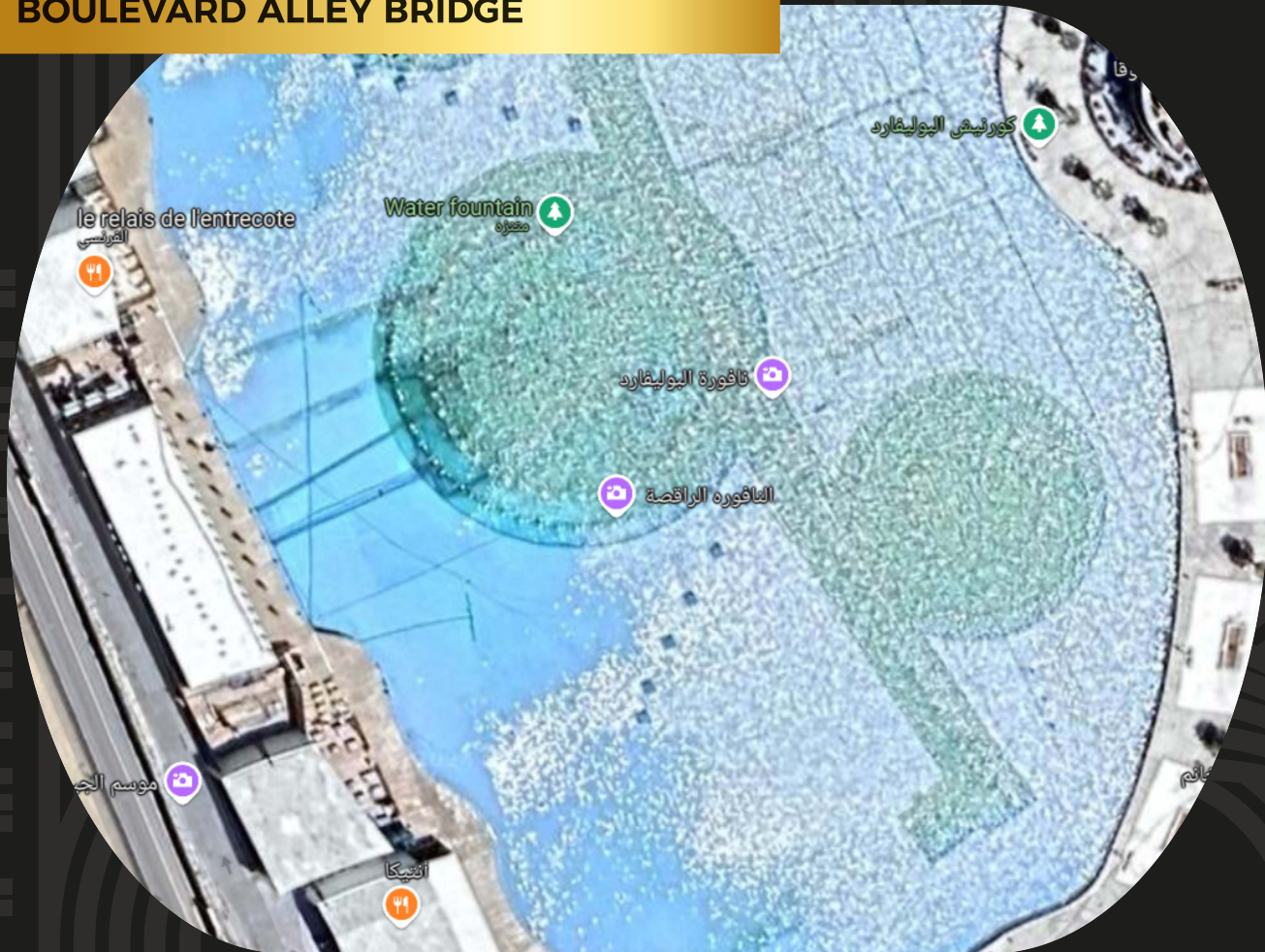


BOULEVARD ALLEY BRIDGE

PROJECT DESCRIPTION

A FOUR HUNDRED LENGTH AND A FIFTEEN METERS WIDTH BRIDGE IN THE MAIN LAKE, THE MAIN SYSTEM IS A MAIN AND SECONDARY BEAMS CARRYING A CONCRETE SLAB ON A METAL DECK, THE PROJECT WAS ACCOMPLISHED IN 10 DAYS.

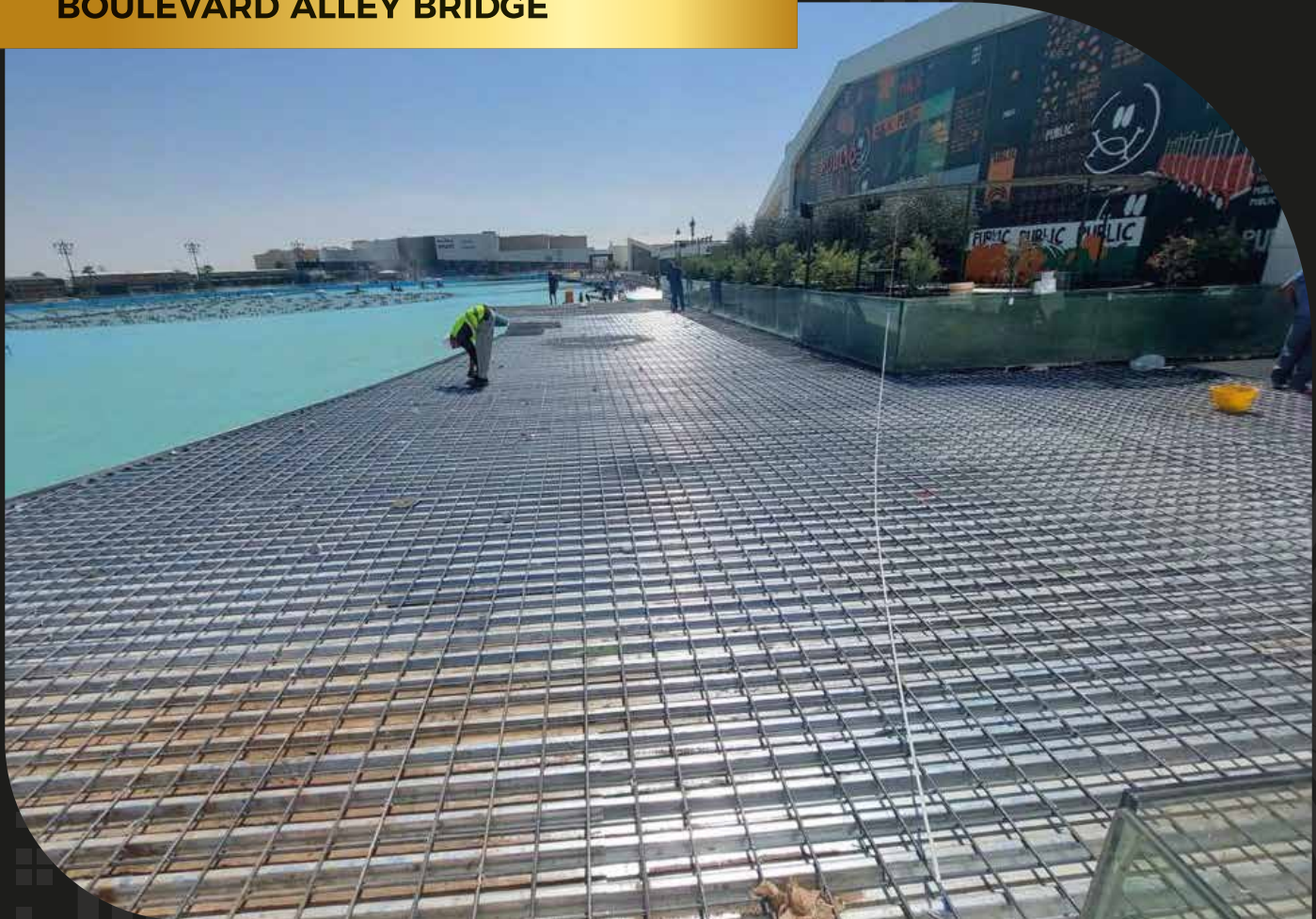
BOULEVARD ALLEY BRIDGE



BOULEVARD ALLEY BRIDGE



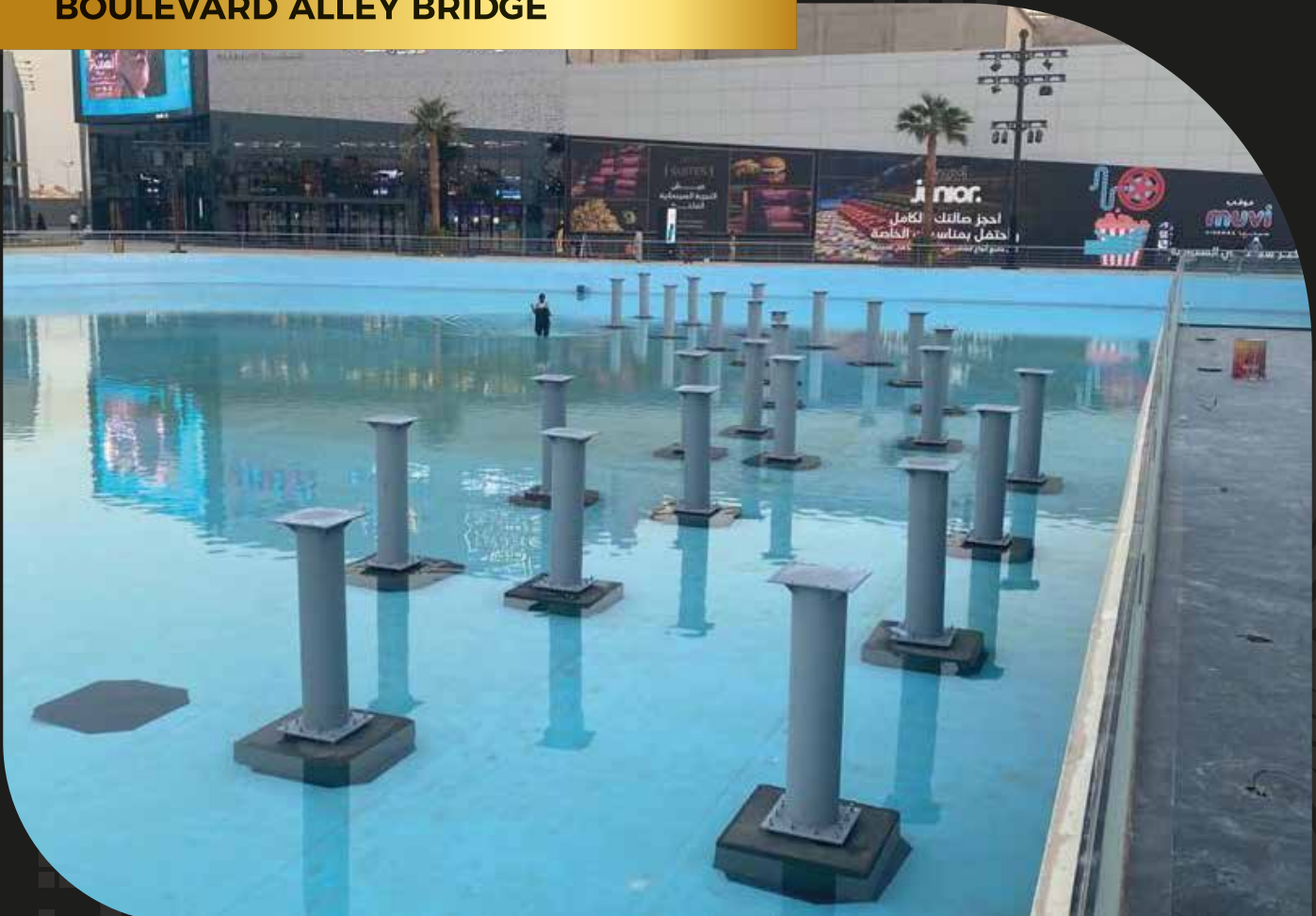
BOULEVARD ALLEY BRIDGE



BOULEVARD ALLEY BRIDGE



BOULEVARD ALLEY BRIDGE





BOULEVARD SKY SCREEN

PROJECT DESCRIPTION

A 600 M2 SKY SCREEN, 10 METERS ABOVE THE GROUND LEVEL CONSIST OF A SEGMENTAL SCREENS HANGED TO A STEEL STRUCTURAL SYSTEM, THE PROJECT WAS DESIGNED AND BUILT BY J.A AND WAS ACCOMPLISHED IN 15 DAYS.

BOULEVARD SKY SCREEN



BOULEVARD SKY SCREEN



LITTER PETROL STATION IN MAKKAH

PROJECT DESCRIPTION

A 670 M2 PETROL STATION AND SERVICES BUILDINGS IN MAKKAH, THE PROJECT WAS DESIGNED AND BUILT BY J.A AND WAS ACCOMPLISHED IN 15 DAYS

LITTER PETROL STATIONIN MAKKAH



LITTER PETROL STATIONIN MAKKAH



LITTER PETROL STATIONIN MAKKAH



LITTER PETROL STATIONIN MAKKAH



LITTER PETROL STATIONIN MAKKAH



LITTER PETROL STATION IN JAZAN

PROJECT DESCRIPTION

A 380 M2 PETROL STATION IN JAZAN,
THE PROJECT WAS DESIGNED AND
BUILT BY J.A AND WAS ACCOMPLISHED
IN 15 DAYS



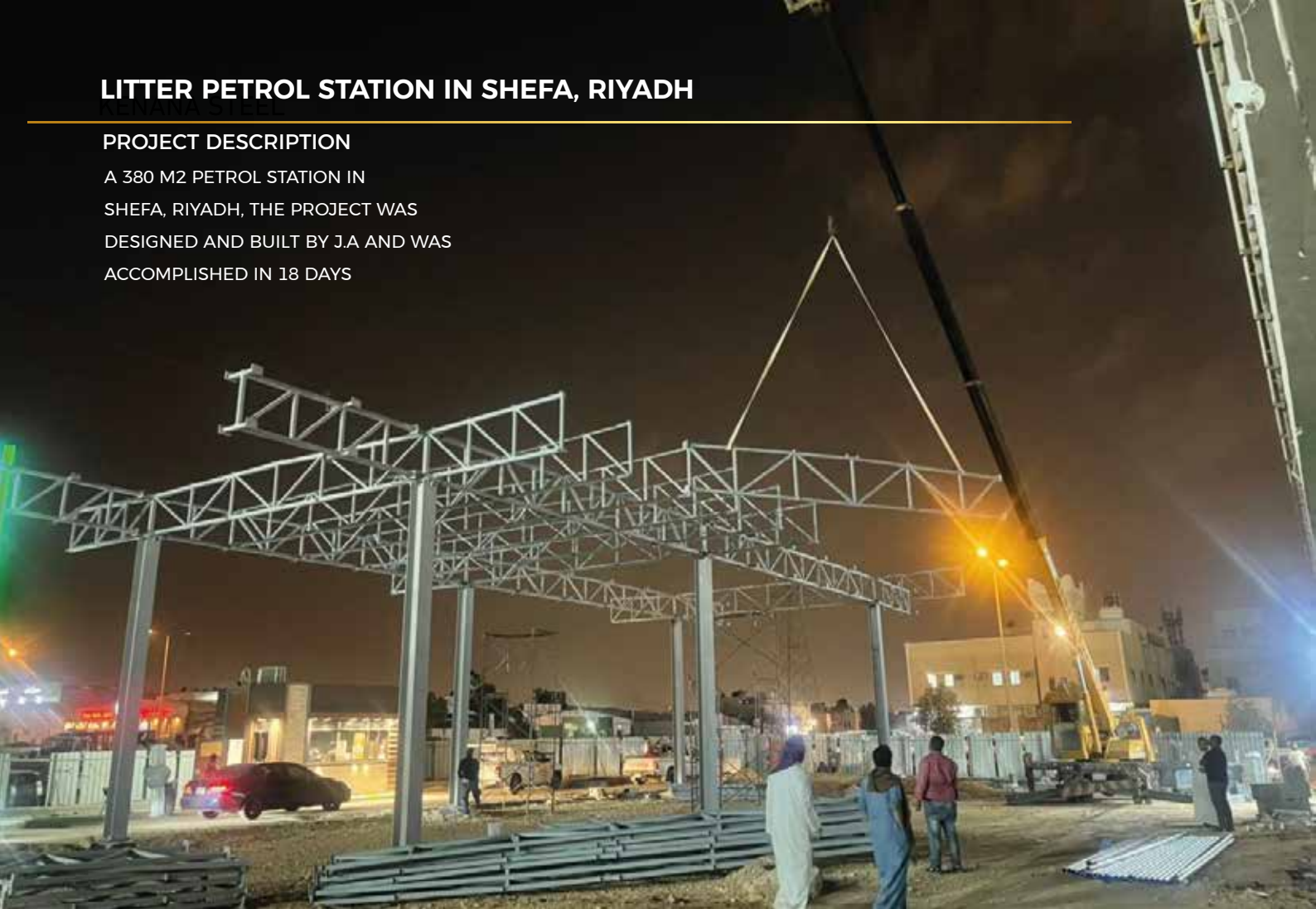




LITTER PETROL STATION IN SHEFA, RIYADH

PROJECT DESCRIPTION

A 380 M2 PETROL STATION IN SHEFA, RIYADH, THE PROJECT WAS DESIGNED AND BUILT BY J.A AND WAS ACCOMPLISHED IN 18 DAYS



LITTER PETROL STATION IN SHEFA, RIYADH



LITTER PETROL STATION IN SHEFA, RIYADH



LITTER PETROL STATION IN SHEFA, RIYADH





RESTAURANT GATE IN HITTEEN, RIYADH

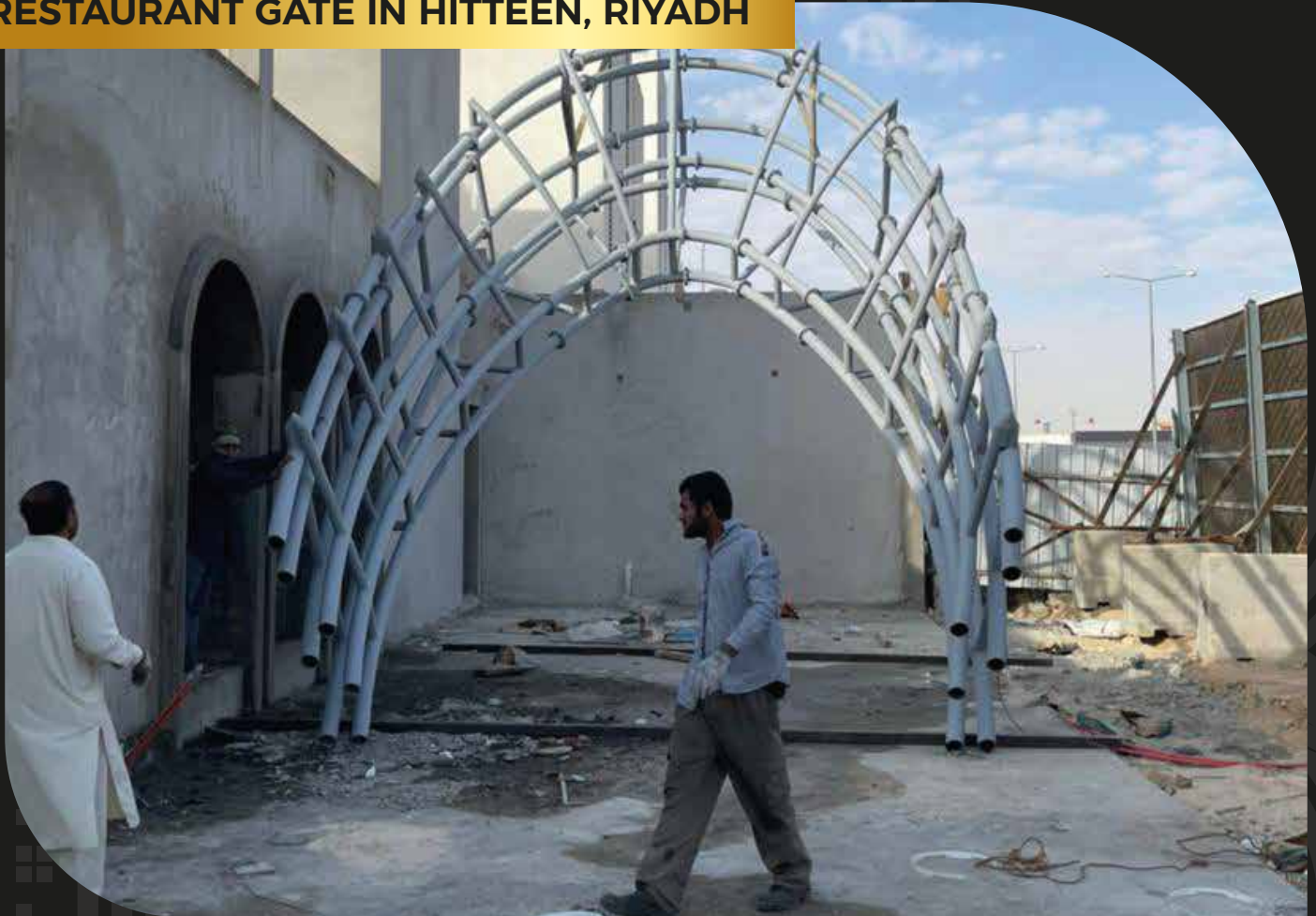
PROJECT DESCRIPTION

A CURVED VERTICAL GATE MADE FROM
A BOLTED CONNECTED TUBES SYSTEM
, THE PROJECT WAS DESIGNED AND
BUILT BY J.A AND WAS ACCOMPLISHED
IN 12 DAYS

RESTAURANT GATE IN HITTEEN, RIYADH



RESTAURANT GATE IN HITTEEN, RIYADH



RESTAURANT GATE IN HITTEEN, RIYADH





BOULEVARD CITY MAIN GATES

PROJECT DESCRIPTION

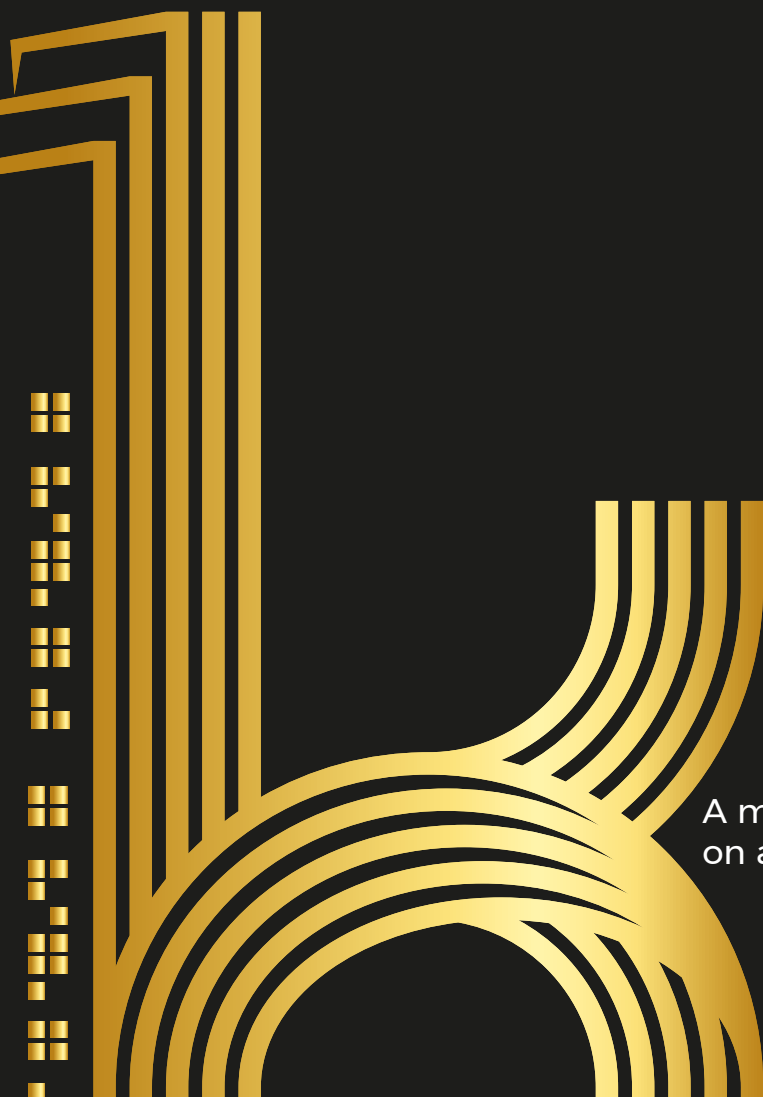
A TWO TYPES OF GATES FOR THE CAR PARKING SPACE AND THE MAIN HALLS SPACES AND A SIGNAGE COLUMN WITH 12M HEIGHT AND A 7M DOUBLE CANTILEVER. THE PROJECT WAS ACCOMPLISHED IN 30 DAYS

BOULEVARD CITY MAIN GATES



BOULEVARD CITY MAIN GATES





Al Rowad Schools Hal

A multiple tubbed curved truss system rested on a 20m built up beams to cover a 800m² space

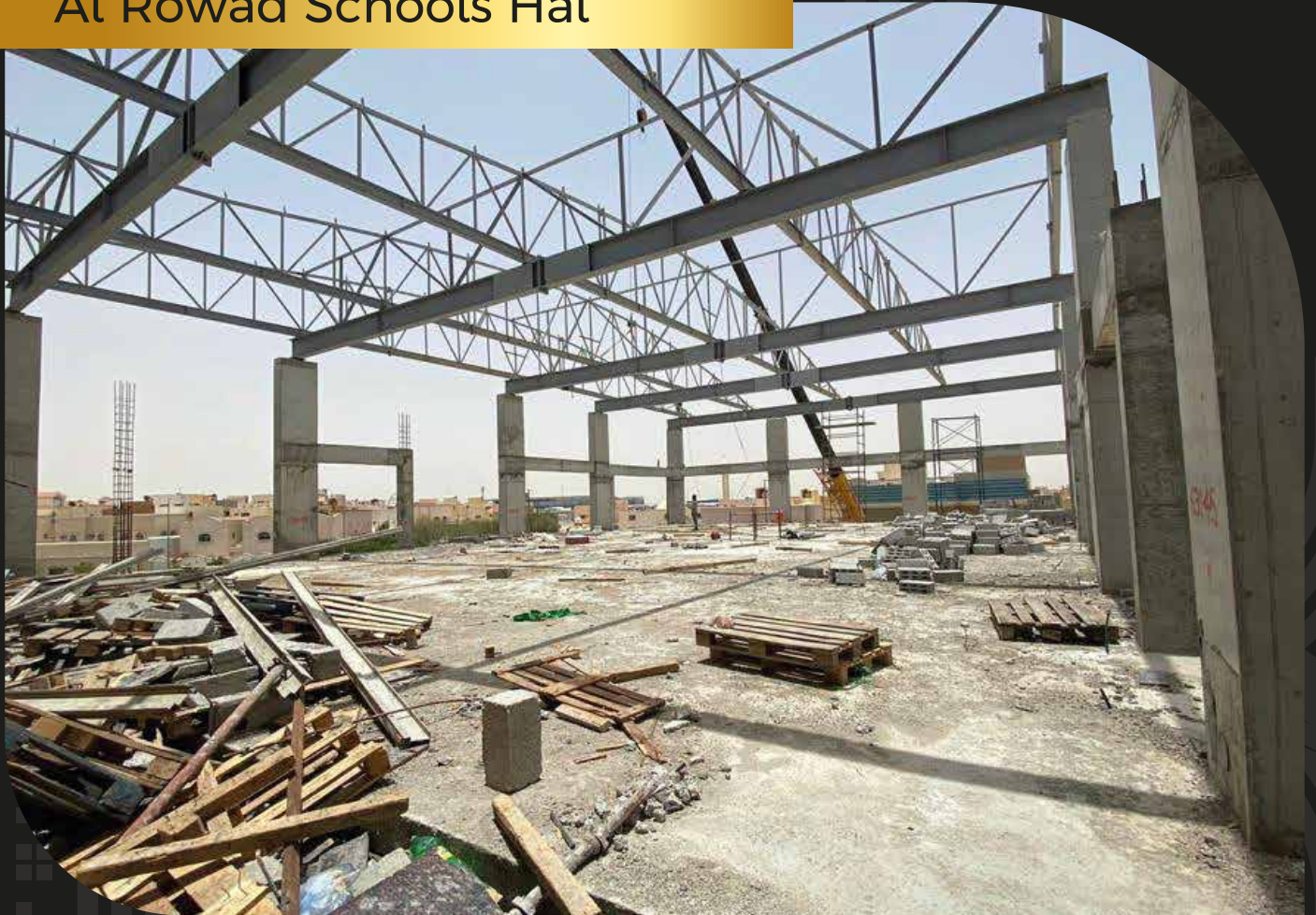
Al Rowad Schools Hal



Al Rowad Schools Hal



Al Rowad Schools Hal



Al Rowad Schools Hal

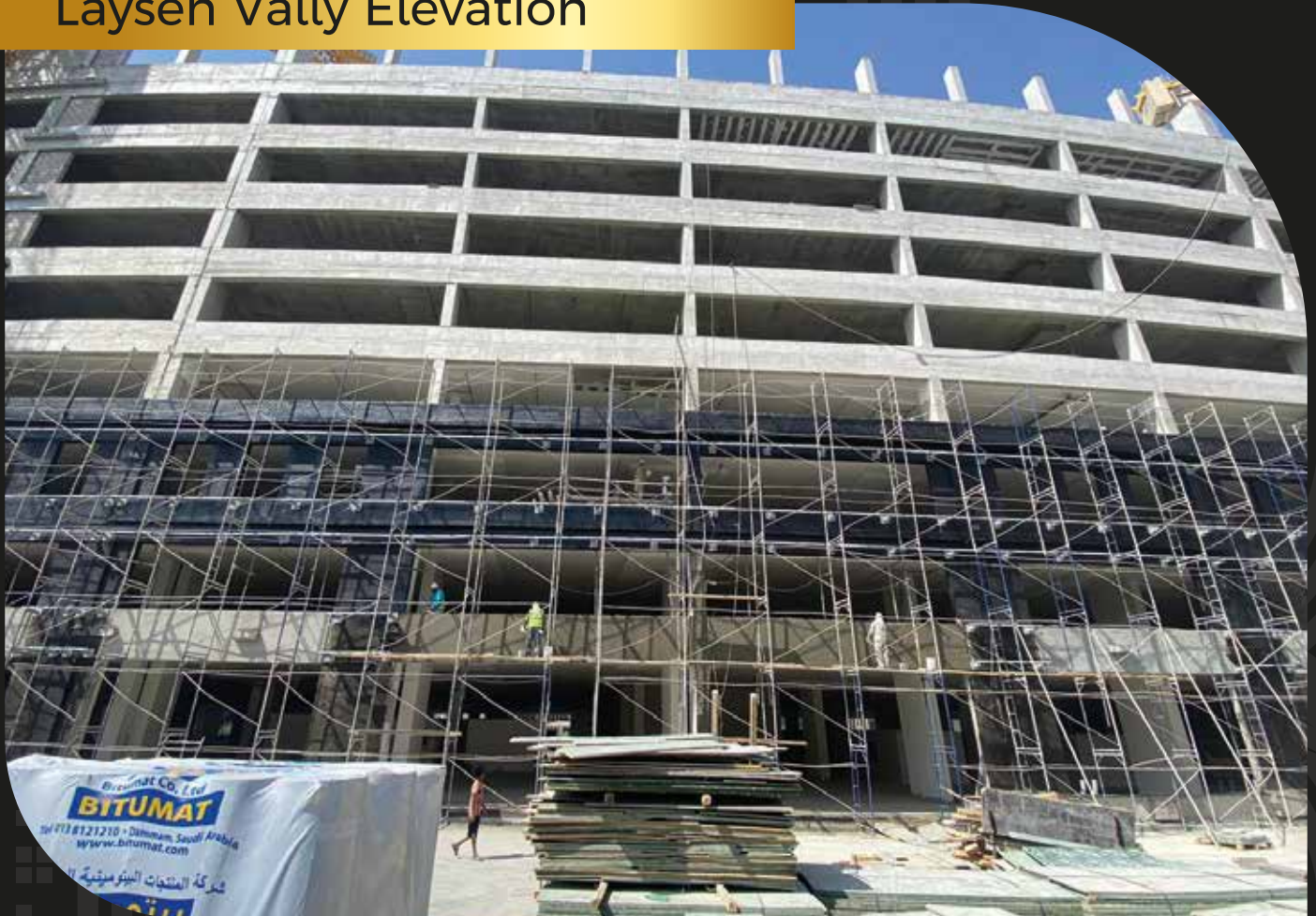




Laysen Vally Elevation

A tube calntilivers fixed directlly to the existing concrete structure carrying a secondary tubes formin a 5000m2 chasses to form the main skeleton for the elevation cladding, project was accomplished in 30 days

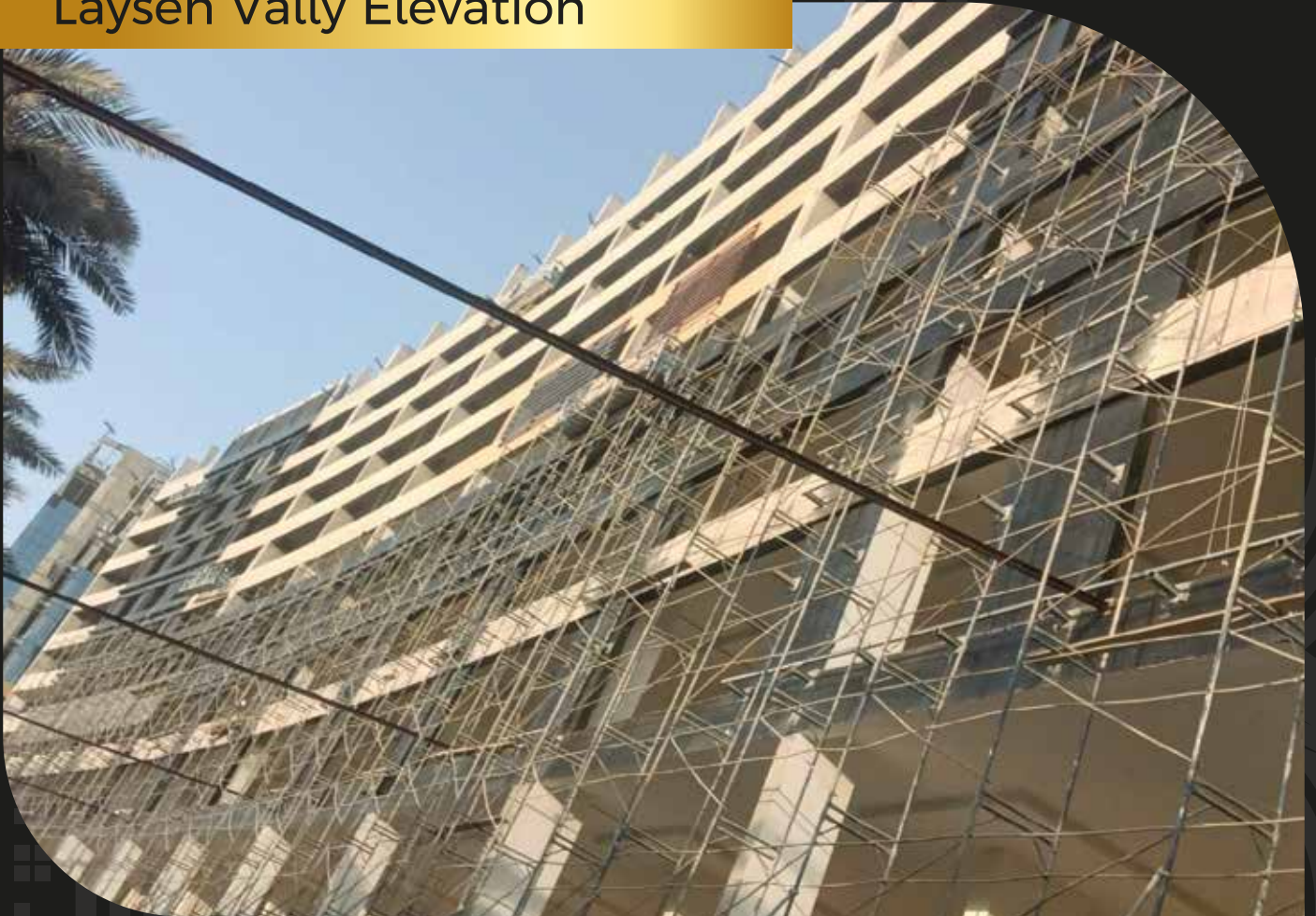
Laysen Vally Elevation



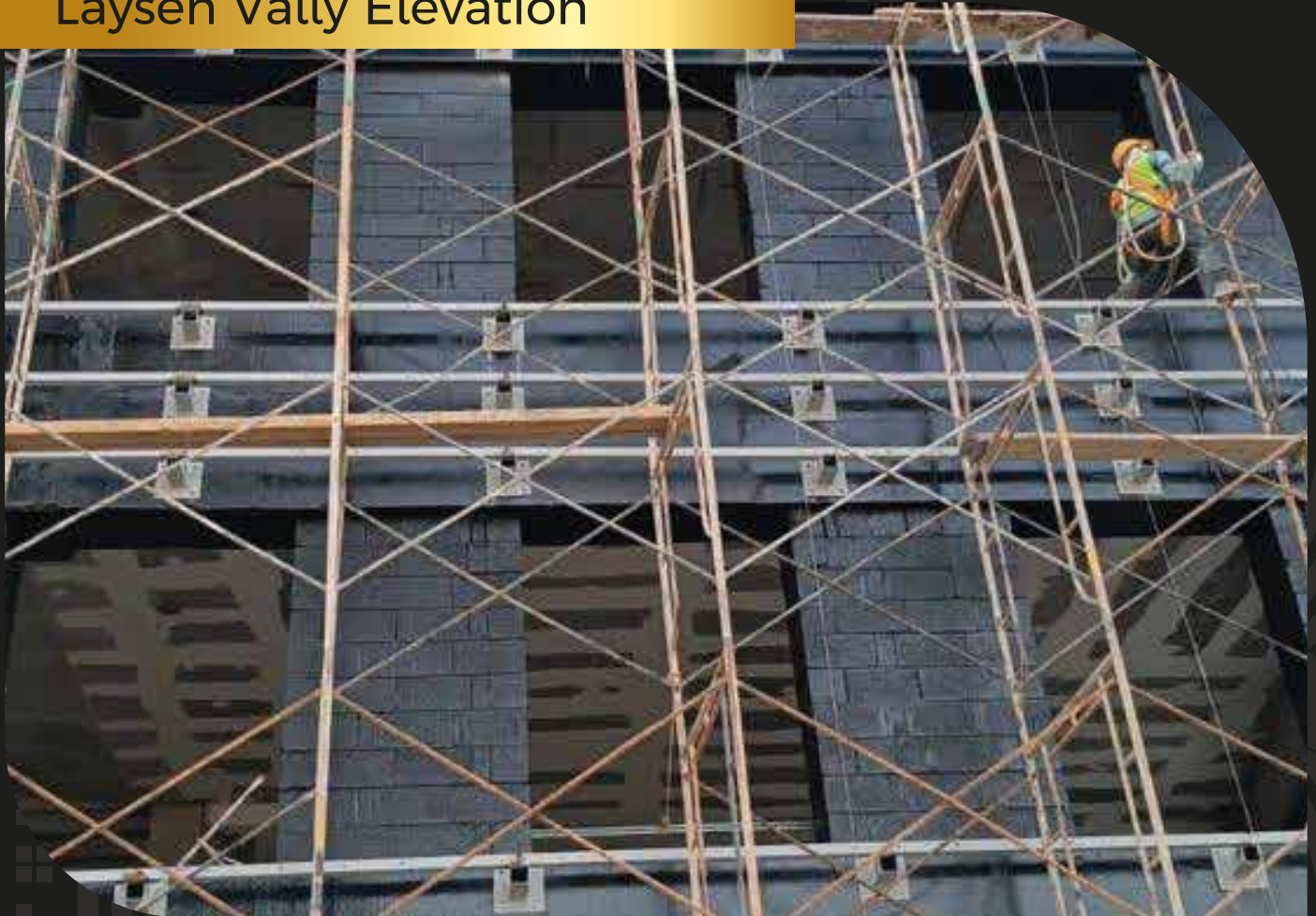
Bitumat Co., Ltd
BITUMAT
Tel: 913 8121210 • Dammam, Saudi Arabia
www.bitumat.com

شركة المنتجات البتومينية
Bitumat

Laysen Vally Elevation



Laysen Vally Elevation



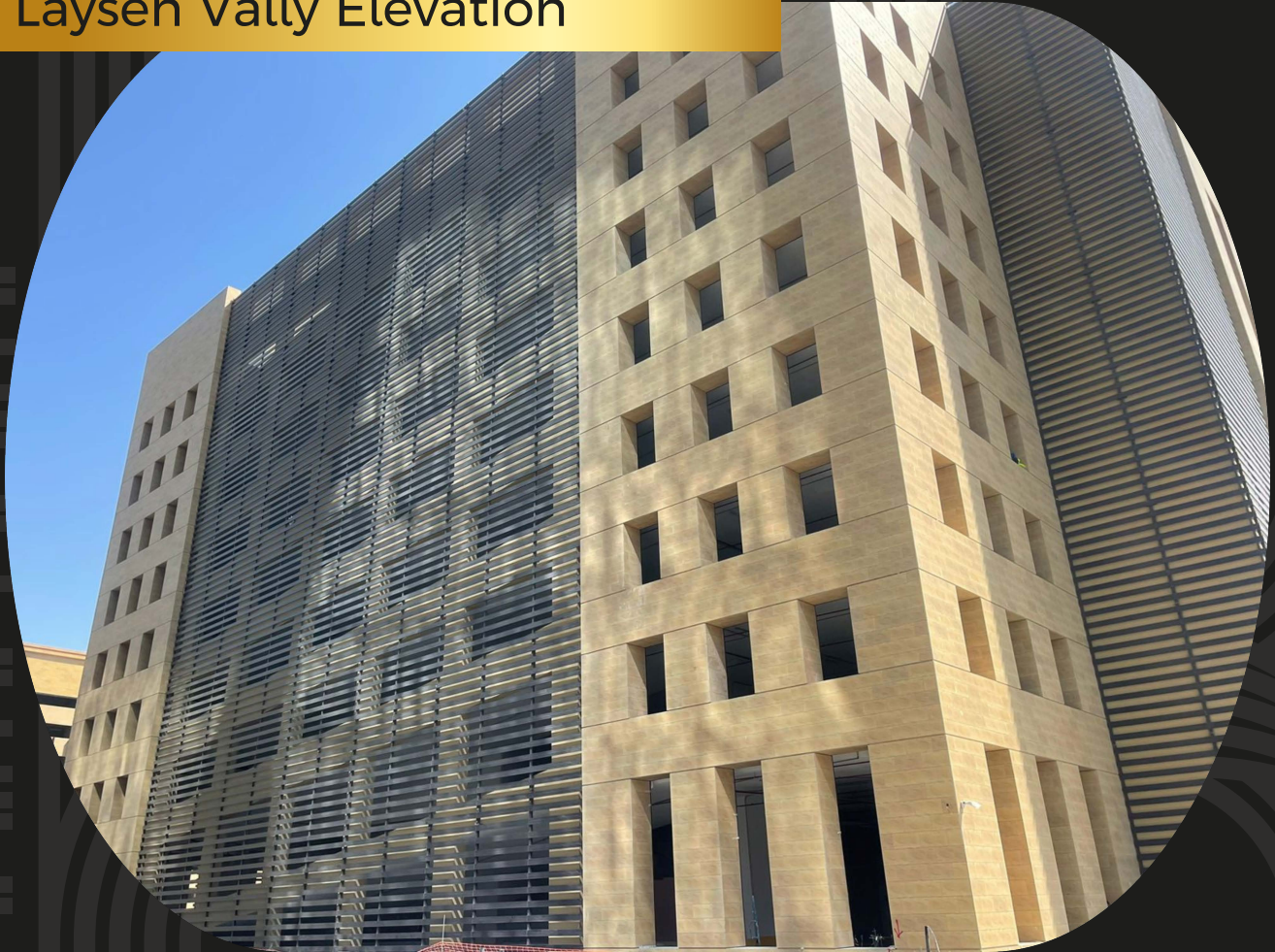
Laysen Vally Elevation



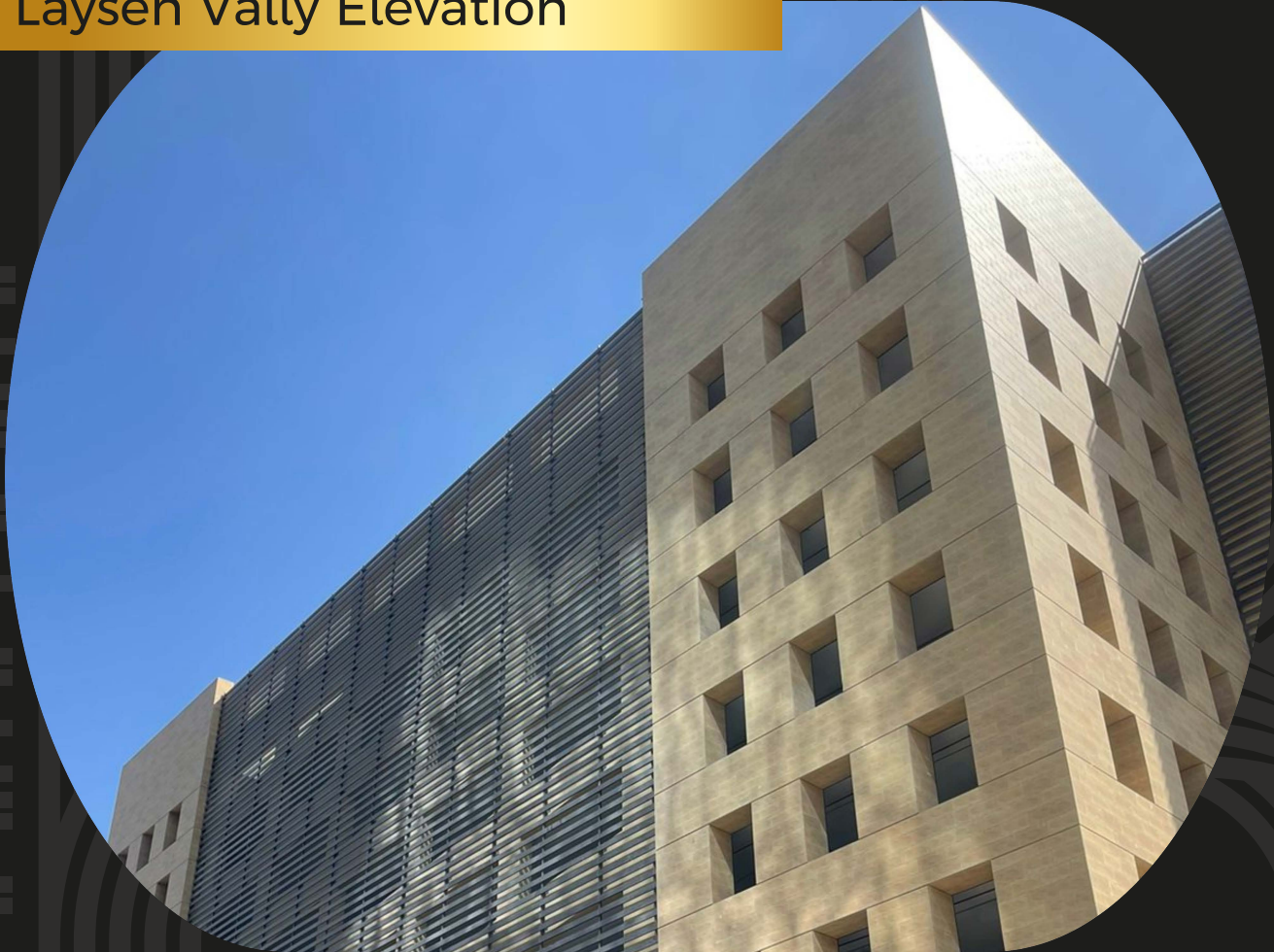
Laysen Vally Elevation



Laysen Vally Elevation



Laysen Vally Elevation





**Work
with
Us**



Phone Number

+966 54 810 0247



Email Address

info@kenanagroup.com



Website

kenanagroup.com